

**D-Link**<sup>®</sup>

# One Connection - Infinite Possibilities

*Product guide*



SWITCHES | WIRELESS | INDUSTRIAL & M2M | 4G/5G | DIGITAL HOME

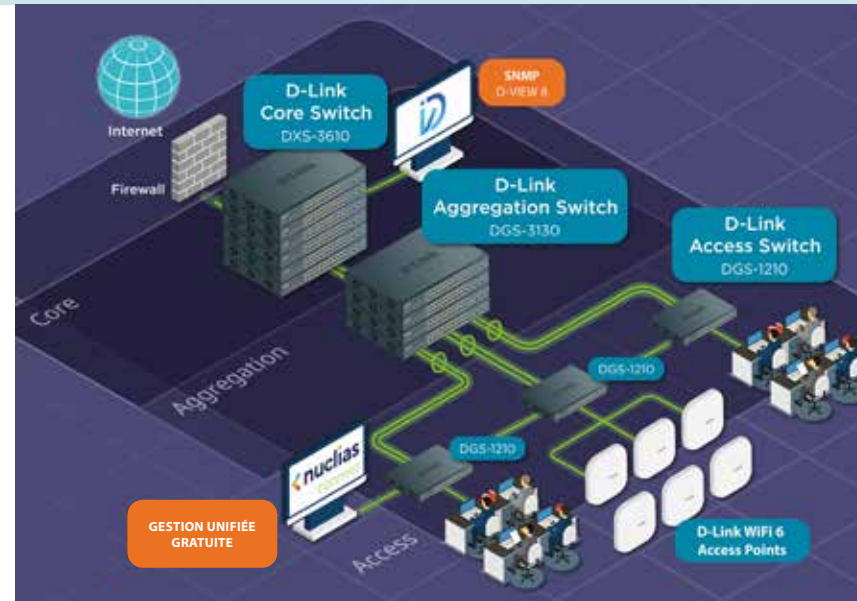
## WHY D-LINK ?



D-Link, the preferred choice of millions of customers since 1986, is a Taiwanese manufacturer at the forefront of innovation. As the Internet and networking have evolved, we have continuously led the way in new technologies. Our cutting-edge products meet the needs of both businesses and individuals, providing reliable and high-performance solutions. Committed to the environment, we have developed Green Ethernet technology, demonstrating our dedication to a greener and more sustainable future.

D-Link stays ahead of technological trends thanks to its resources and expertise, offering a wide range of solutions that combine performance and reliability.

Our commitment goes beyond technological innovation; our true strength lies in our dedicated team. Close and local, our employees are passionately committed to pre-sales and after-sales support, ensuring exceptional customer service.



### For Businesses

D-Link provides the scale, resources, and expertise that even the most demanding companies seek. We stay close to our customers and, thanks to our R&D, we quickly deliver advanced solutions.

Our switching, Wi-Fi, industrial Ethernet, M2M, and cloud network management solutions offer top-tier performance. We provide standardised, flexible, reliable, and secure technologies that are easy to implement and cost-effective.

### For the Home

We live in a digital world where we want all our devices to communicate and integrate seamlessly, without human intervention. We want to stream music, ask Siri or Alexa for the weather, monitor our babies or pets, download HD movies, share photos, play games, and check our emails.

To achieve this, we need modern and advanced products. D-Link offers it all: Wi-Fi 6 routers, network cameras, smart plugs, Wi-Fi range extenders, and 5G hotspots. There is a D-Link product for every need.



Many of our business products come with a limited lifetime warranty, reflecting our commitment to delivering even greater quality, performance, and value.

CONTENT



**SWITCHING**

- Unmanaged Switches
- Smart-Managed Switches
- Managed and Stackable 10 GbE Switches
- Managed Top-of-Rack Switches (10, 25, 40, 100 GbE)
- Switches for Video Surveillance
- Network Management Software



**WIRELESS / UNIFIED WIRELESS**

- Wireless
- Nuclias Connect
- Nuclias Cloud
- Unified Wireless



**INDUSTRIAL & M2M SOLUTIONS**

- Industrial Switches
- M2M 4G & 5G Routers



**mydlink**

Indoor and Outdoor Wi-Fi Cameras with mydlink app for remote management.



**SOLUTIONS FOR THE HOME**

- EAGLE PRO AI and AQUILA PRO AI
- Mesh Wi-Fi Solutions
- Wi-Fi Extenders
- Wi-Fi Adapters and Cards
- Wi-Fi Routers



**4G/5G**

- 4G/5G Routers
- Portable Hotspots
- USB Adapters
- Outdoor 5G/LTE CPE

**USB Docking Stations**



Value in Partnership<sup>+</sup>

**PARTNER PROGRAMME**

- Online Training
- Sales Support Tools

SWITCHES



### Switches from Core to Edge of the Network

Imagine this for a moment: a switch fails, and your business faces a range of issues, from loss of connectivity for certain users to a major network outage. To avoid these disruptions, trust D-Link's complete range of switches. Whether for the core of your network or its edge, D-Link offers solutions for all your needs: Gigabit, Multi-gigabit, 10 Gigabit, PoE or non-PoE switches. Our products range from plug-and-play models to fully manageable L3 solutions, specially designed for network cores and data centers. With D-Link, ensure reliable and high-performance connectivity, and say goodbye to interruptions!

For harsh environments, industrial switches are robust and can operate in extreme temperature and humidity conditions.

### Why Choose Multi-Gigabit

Switching to a multi-gigabit network allows you to handle the pressure exerted by new applications like video conferencing or streaming, which demand higher bandwidth. It's also a way to anticipate future developments and ensure that the network will be ready to accommodate the increasing volume of data and enable the deployment of emerging technologies such as Wi-Fi 7 or artificial intelligence, which is becoming more widespread and requires a robust network infrastructure capable of supporting high data rates. Faster and more reliable networks improve operational efficiency and reduce maintenance or downtime costs.

### Multi-Gigabit 2.5G/10G Unmanaged



|                   |  | 2.5G / 10G |                       |            |                      |            |            |            |
|-------------------|--|------------|-----------------------|------------|----------------------|------------|------------|------------|
|                   |  | DMS-105    | DMS-107               | DMS-108    | DMS-108P             | DMS-106XT  | DMS-1016   | DMS-1024   |
| HARDWARE          | MODEL                                      | DMS-105    | DMS-107               | DMS-108    | DMS-108P             | DMS-106XT  | DMS-1016   | DMS-1024   |
|                   | Number of 10/100/1000BASE-T ports          |            | 5                     |            |                      |            |            |            |
|                   | Number of 10/100/1000/2.5GBASE-T ports     | 5          | 2                     | 8          | 8                    | 5          | 16         | 24         |
|                   | Number of 10/100/1000/2.5G/10GBASE-T ports |            |                       |            |                      | 1          |            |            |
|                   | Switching capacity                         | 25 Gbps    | 20 Gbps               | 40 Gbps    | 40 Gbps              | 45 Gbps    | 80 Gbps    | 120 Gbps   |
|                   | PoE standards                              |            |                       |            | 802.3af/at/bt        |            |            |            |
|                   | PoE power budget                           |            |                       |            | 240 W                |            |            |            |
|                   | PoE capable ports                          |            |                       |            | Ports 1-8, up to 90W |            |            |            |
|                   | Desktop                                    | *          | *                     | *          | *                    | *          | *          | *          |
|                   | Wall-mountable                             | *          | *                     | *          | *                    |            |            |            |
|                   | Rackmountable*                             |            |                       |            |                      |            | *          | *          |
|                   | Metal enclosure                            | *          | *                     | *          | *                    | *          | *          | *          |
|                   | Fanless                                    | *          | *                     | *          | *                    | *          | *          | *          |
|                   | MAC address                                | 4K         | 2K                    | 4K         | 4K                   | 4K         | 4K         | 4K         |
|                   | Jumbo frame                                | 9216 Bytes | 9216 Bytes            | 9216 Bytes | 9216 Bytes           | 9728 Bytes | 9216 Bytes | 9216 Bytes |
|                   | 802.1p QoS                                 | *          | * (Gigabit port only) | *          | *                    | *          | *          | *          |
|                   | Number of QoS queues                       | 8          | 8                     | 8          | 8                    | 8          | 8          | 8          |
|                   | IGMP snooping                              | *          |                       | *          | *                    | *          | *          | *          |
|                   | Cable diagnostics                          |            |                       |            |                      | *          | *          | *          |
| D-Link Green      | *  | *          | *                     | *          | *                    | *          | *          |            |
| 802.3az EEE       | *  | *          | *                     | *          | *                    | *          | *          |            |
| Power supply type | External                                   | External   | External              | External   | External             | Internal   | Internal   |            |

Unmanaged Fast Ethernet

Fast Ethernet



| MODEL                         | DES-1005D | DES-105         | DES-1005P            | DES-1008D | DES-108         | DES-1016D        | DES-1024D       |
|-------------------------------|-----------|-----------------|----------------------|-----------|-----------------|------------------|-----------------|
| Number of Fast Ethernet ports | 5         | 5               | 5                    | 8         | 8               | 16               | 24              |
| Switching capacity            | 1 Gbps    | 1 Gbps          | 1 Gbps               | 1.6 Gbps  | 1.6 Gbps        | 3.2 Gbps         | 4.8 Gbps        |
| PoE standards                 |           |                 | 802.3af, 802.3at     |           |                 |                  |                 |
| PoE power budget              |           |                 | 60 W                 |           |                 |                  |                 |
| PoE capable ports             |           |                 | Port 1-4, up to 30 W |           |                 |                  |                 |
| Desktop                       | •         | •               | •                    | •         | •               | •                | •               |
| Rackmountable*                |           |                 |                      |           |                 | •                | •               |
| Metal enclosure               |           | •               | •                    |           | •               | •                | •               |
| Fanless                       | •         | •               | •                    | •         | •               | •                | •               |
| MAC address                   | 2K        | 2K              | 2K                   | 1K        | 1K              | 8K               | 8K              |
| Jumbo frame                   |           | 2047 Bytes      |                      |           | 1536 Bytes      | 2000 Bytes       |                 |
| 802.1p QoS                    |           | • (Strict mode) | • (Strict mode)      |           | • (Strict mode) | 2• (Strict mode) | • (Strict mode) |
| Number of QoS queues          |           | 2               | 4                    |           | 2               | 4                | 4               |
| D-Link Green                  | •         | •               | •                    | •         | •               | •                | •               |
| 802.3az EEE                   | •         | •               | •                    | •         | •               | •                | •               |
| Power supply type             | External  | External        | External             | External  | External        | Internal         | Internal        |

Unmanaged Gigabit

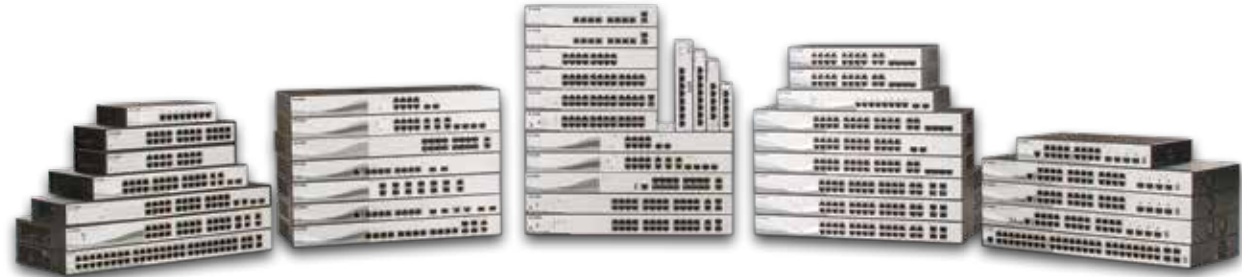
Gigabit Ethernet



| MODEL  | DGS-1005D       | DGS-105         | DGS-1005P             | DGS-1008D       | DGS-108         | DGS-1008P             | DGS-1008MP            | DGS-1010MP     | DGS-1016D    | DGS-1018P  | DGS-1024D    | DGS-1026P  | DGS-1026MP             |
|--|-----------------|-----------------|-----------------------|-----------------|-----------------|-----------------------|-----------------------|----------------|--------------|--|--------------|--|------------------------|
| Number of Gigabit ports  | 5               | 5               | 5                     | 8               | 8               | 8                     | 8                     | 8 + 1          | 16           | 16   | 24           | 24   | 24                     |
| Number of Combo 1000BASE-T/SFP ports                           |                 |                 |                       |                 |                 |                       |                       | 1              |              |  |              |  | 2                      |
| Number of SFP ports  |                 |                 |                       |                 |                 |                       |                       |                |              | 2  |              | 2  |                        |
| Switching capacity   | 10 Gbps         | 10 Gbps         | 10 Gbps               | 16 Gbps         | 16 Gbps         | 16 Gbps               | 16 Gbps               | 20 Gbps        | 32 Gbps      | 36 Gbps  | 48 Gbps      | 52 Gbps  | 52 Gbps                |
| PoE standards  |                 |                 | 802.3af, 802.3at      |                 |                 | 802.3af, 802.3at      | 802.3af, 802.3at      | 802.af, 802.at |              | 802.3af, 802.3at   |              | 802.3af, 802.3at   | 802.3af, 802.3at       |
| PoE power budget   |                 |                 | 60 W                  |                 |                 | 68 W                  | 125 W                 | 125 W          |              | 240 W  |              | 240 W  | 370 W                  |
| PoE capable ports  |                 |                 | Ports 1-4, up to 30 W |                 |                 | Ports 1-4, up to 30 W | Ports 1-8, up to 30 W | 8              |              | Ports 1-16, up to 30 W                                       |              | Ports 1-24, up to 30 W                                       | Ports 1-24, up to 30 W |
| DIP switch (EEE/Flow Control/Port Isolation and Storm Control) |                 |                 |                       |                 |                 |                       |                       |                | •            | • (Flow Control, Port Isolation and Storm Control, 250m PoE) |              | • (Flow Control, Port Isolation and Storm Control, 250m PoE) |                        |
| Desktop  | •               | •               | •                     | •               | •               | •                     | •                     | •              | •            | •  | •            | •  | •                      |
| Rackmountable*   |                 |                 |                       |                 |                 |                       | •                     | •              | •            | •  | •            | •  | •                      |
| Metal enclosure  |                 | •               | •                     | •               | •               | •                     | •                     | •              | •            | •  | •            | •  | •                      |
| Fanless  | •               | •               | •                     | •               | •               | •                     | •                     | •              | •            | 2 x smart fan  | •            | 2 x smart fan  | 2 x smart fan          |
| MAC address  | 8K              | 2K              | 2K                    | 4K              | 8K              | 4K                    | 8K                    | 4K             | 8K           | 8K   | 8K           | 8K   | 8K                     |
| Jumbo frame  | 9720 Bytes      | 9216 Bytes      | 9216 Bytes            | 9720 Bytes      | 9216 Bytes      | 9720 Bytes            | 9216 Bytes            |                | 10,000 Bytes | 9216 Bytes   | 10,000 Bytes | 9216 Bytes   | 9600 Bytes             |
| 802.1p QoS   | • (Strict mode) | • (Strict mode) | • (Strict mode)       | • (Strict mode) | • (Strict mode) | • (Strict mode)       | • (Strict mode)       |                | •            | •  | •            | •  | •                      |
| Number of QoS queues   | 4               | 4               | 4                     | 4               | 4               | 4                     | 4                     |                | 8            |  | 8            |  |                        |
| IGMP snooping  | •               | •               | •                     | •               | •               | •                     | •                     |                | •            | •  | •            | •  | •                      |
| Cable diagnostics  | •               | •               | •                     | •               | •               | •                     | •                     |                | •            | •  | •            | •  | •                      |
| D-Link Green   | •               | •               | •                     | •               | •               | •                     | •                     | •              | •            | •  | •            | •  | •                      |
| 802.3az EEE  | •               | •               | •                     | •               | •               | •                     | •                     | •              | •            | •  | •            | •  | •                      |
| Power supply type  | External        | External        | External              | External        | External        | External              | Internal              | Internal       | Internal     | Internal   | Internal     | Internal   | Internal               |

\* All our rack-mounted switches include the necessary kit for installation in a 19-inch rack.

SWITCHES



**SMART-MANAGED SWITCHES**

*The smart choice.*

Discover the most extensive and versatile range of Smart-Managed Switches. With models ranging from 8 to 52 ports, in Gigabit and Multi-gigabit, and uplinks of 10 Gigabit up to physical stacking, our Smart switches are designed to meet all your needs. Take advantage of advanced network management features to enhance security (VLAN segmentation, access control lists) and optimise performance (static routing, link aggregation, etc.). Trust our solutions for reliable and high-performance connectivity!

They can be managed via the Web interface, CLI commands, or through our Nuclias Connect\* or Nuclias Cloud\* platform for complete network management.

\*depending on the model

**PoE Ports**

Power over Ethernet (PoE) technology uses the LAN cable to power and transmit data to connected PoE devices. Whether you're deploying an IP camera network, Wi-Fi access points, or IP phones, PoE ports simplify installation and reduce deployment costs. PoE ports are a smart investment as they save on electrical installation and additional labor costs.

**Multigigabit/10 Gigabit**

Our 10 Gigabit Smart Switches offer a budget-friendly solution for managing the increasingly necessary migration to 10 Gigabit networks. Whether it's native models with copper RJ-45 ports or hybrid solutions with Gigabit ports and SFP+ ports for 10G uplinks, we have the perfect range to meet all your projects. Models range from basic Easy Smart management to Managed L3 management, allowing you to design a 10 Gigabit network architecture from the core to the uplinks.

**Layer 3 Management**

Layer 3 support with static routing is often reserved for SNMP switches, but at D-Link, we integrate it into our range of DGS-1210 smart switches to enhance network performance and reduce the load on routers and the network backbone. The network can also be optimised with Spanning Tree to improve redundancy and prevent loops, or with Link Aggregation (LACP) to boost performance.

**Stacking**

Physical stacking allows multiple switches to be treated as a single switch for configuration and management purposes (the stack shares the same main IP address), making it an ideal solution for deploying uplinks or network cores. The benefits of stacking go beyond simplified management, as it also provides redundancy in case of a link or unit failure, as well as enhanced performance by separating internal stack traffic from network traffic.



Physical stacking



sFlow



ERPS



ACLs



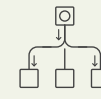
IEEE 802.1Q VLAN



Loopback Detection



Static Route



IGMP Snooping

# Smart Gigabit

## Gigabit Ethernet



|                   | MODEL                                       | DGS-1100-05V2 | DGS-1100-08V2 | DGS-1100-08PV2      | DGS-1100-10MPV2      | DGS-1100-16V2 | DGS-1100-18PV2    | DGS-1100-24V2 | DGS-1100-24PV2        | DGS-1100-26MPV2       |
|-------------------|---|---------------|---------------|---------------------|----------------------|---------------|-------------------|---------------|-----------------------|-----------------------|
| HARDWARE          | Number of 10/100/1000BASE-T ports           | 5             | 8             | 8                   | 8                    | 16            | 16                | 24            | 24                    | 24                    |
|                   | Number of Combo 10/100/1000BASE-T/SFP ports |               |               |                     |                      |               | 2                 |               |                       | 2                     |
|                   | Number of 100/1000 Mbps SFP ports           |               |               |                     | 2                    |               |                   |               |                       |                       |
|                   | Switching capacity                          | 10 Gbps       | 16 Gbps       | 16 Gbps             | 20 Gbps              | 32 Gbps       |                   | 48 Gbps       | 48 Gbps               | 52 Gbps               |
|                   | PoE standards                               |               |               | 802.3af, 802.3at    | 802.3af, 802.3at     |               | 36 Gbps           |               | 802.3af, 802.3at      | 802.3af, 802.3at      |
|                   | Powered by PoE                              |               |               |                     |                      |               | 802.3af - 802.3at |               |                       |                       |
|                   | PoE power budget                            |               |               | 64 W                | 130 W                |               |                   |               | 100 W                 | 370 W                 |
|                   | PoE capable ports                           |               |               | Port 1-8, up to 30W | Port 1-8, up to 30 W |               | 130W              |               | Port 1-12, up to 30 W | Port 1-24, up to 30 W |
|                   | Fanless                                     | •             | •             | •                   |                      | •             | 16                | •             | •                     | •                     |
|                   | D-Link Green                                | •             | •             | •                   | •                    | •             | 1 x fan           | •             | •                     | •                     |
| 802.3az EEE       | •   | •             | •             | •                   | •                    | Yes           | •                 | •             | •                     |                       |
| Power supply type | External                                    | External      | External      | Internal            | Internal             | Yes           | Internal          | Internal      | Internal              |                       |
| L2                | MAC address                                 | 2K            | 4K            | 4K                  | 8K                   | 8K            | Internal          | 8K            | 8K                    | 8K                    |
|                   | 802.1D STP, 802.1w RSTP, 802.1s MSTP        |               |               |                     |                      |               | 8190              |               |                       |                       |
|                   | 802.3ad, 802.1AX link aggregation           | Static trunk  | Static trunk  | Static trunk        | •                    | •             | STP - RSTP        | •             | •                     | 802.3ad               |
| VLAN              | VLAN group (max static)                     | 32            | 32            | 32                  | 128                  | 128           | Yes               | 128           | 128                   | 128                   |
|                   | Port / MAC / protocol-based VLAN, GVRP      | Port          | Port          | Port                | Port                 | Port          | 128               | Port          | Port                  | Port                  |
|                   | Asymmetric VLAN                             | •             | •             | •                   | •                    | •             | Port-based VLAN   | •             | •                     | •                     |
|                   | Auto Voice/Surveillance VLAN                | •             | •             | •                   | •                    | •             | Yes               | •             | •                     | •                     |
| L3                | IPv4/IPv6 routing table                     |               |               |                     |                      |               | Yes               |               |                       |                       |
|                   | IP interfaces                               |               |               |                     |                      |               |                   |               |                       |                       |
|                   | IPv6 support                                |               |               |                     |                      |               |                   |               |                       |                       |
|                   | Routing table size                          |               |               |                     |                      |               |                   |               |                       |                       |
| QoS               | Static route for IPv4/IPv6                  |               |               |                     |                      |               |                   |               |                       |                       |
|                   | Number of queues per port                   | 4             | 4             | 4                   | 8                    | 8             |                   | 8             | 8                     | 4                     |
|                   | CoS based on contents                       |               |               |                     |                      |               | 8                 |               |                       |                       |
| ACL               | Bandwidth control (min. granularity)        | • (8 Kbps)    | • (8 Kbps)    | • (8 Kbps)          | • (16 Kbps)          | • (16 Kbps)   | Yes               | • (16 Kbps)   | • (16 Kbps)           | • (8 Kbps)            |
|                   | ACL (Ingress / Egress / VLAN-based)         |               |               |                     |                      |               | 16 Kbps           |               |                       |                       |
| SECURITY          | Based on packet contents                    |               |               |                     |                      |               |                   |               |                       |                       |
|                   | SSH, SSL (v1/v2/v3)                         |               |               |                     |                      |               |                   |               |                       |                       |
|                   | Smart Binding                               |               |               |                     |                      |               | SSL               |               |                       |                       |
|                   | Loopback Detection                          | •             | •             | •                   | •                    | •             |                   | •             | •                     | •                     |
| AAA               | ARP spoofing                                |               |               |                     |                      |               | Yes               |               |                       |                       |
|                   | 802.1X access control                       |               |               |                     |                      |               |                   |               |                       |                       |
|                   | RADIUS server support                       |               |               |                     |                      |               |                   |               |                       |                       |
| MANAGEMENT        | SNMP (v1/v2c/v3), RMON v1                   |               |               |                     |                      |               |                   |               |                       |                       |
|                   | LLDP-MED                                    |               |               |                     |                      |               | SNMP v1/v2c       |               |                       |                       |
|                   | ICMPv6                                      |               |               |                     |                      |               |                   |               |                       |                       |
|                   | Nuclias Connect                             |               |               |                     | •                    | •             | •                 | •             | •                     | •                     |

SWITCHES

Smart Gigabit

Gigabit Ethernet



|                   | MODEL                                       | DGS-1210-08P          | DGS-1210-10 | DGS-1210-10P          | DGS-1210-10MP         | DGS-1210-24P          | DGS-1210-20 | DGS-1210-16    |
|-------------------|---|-----------------------|-------------|-----------------------|-----------------------|-----------------------|-------------|----------------|
| HARDWARE          | Number of 10/100BASE-TX ports               |                       |             |                       |                       |                       |             |                |
|                   | Number of 10/100/1000BASE-T ports           | 8                     | 8           | 8                     | 8                     | 24                    | 16          | 16             |
|                   | Number of Combo 10/100/1000BASE-T/SFP ports |                       |             |                       |                       | 4                     | 4           | 4              |
|                   | Number of 100/1000 Mbps SFP ports           | 2                     | 2           | 2                     | 2                     |                       |             |                |
|                   | Switching capacity                          | 20 Gbps               | 20 Gbps     | 20 Gbps               | 20 Gbps               | 56 Gbps               | 40 Gbps     | 40 Gbps        |
|                   | PoE standards                               | 802.3af, 802.3at      |             | 802.3af, 802.3at      | 802.3af, 802.3at      | 802.3af, 802.3at      |             |                |
|                   | PoE power budget                            | 65 W                  |             | 65 W                  | 130 W                 | 193 W                 |             |                |
|                   | PoE capable ports                           | Ports 1-8, up to 30 W |             | Ports 1-8, up to 30 W | Ports 1-8, up to 30 W | Ports 1-24, up to 30W |             |                |
|                   | Perpetual PoE                               |                       |             | *                     | *                     |                       |             |                |
|                   | Fanless                                     | *                     | *           | *                     | *                     |                       | *           | *              |
|                   | D-Link Green                                | *                     | *           | *                     | *                     | *                     | *           | *              |
| 802.3az EEE       | *   | *                     | *           | *                     | *                     | *                     | *           |                |
| Power supply type | External                                    | Internal              | External    | Internal              | Internal              | Internal              | Internal    |                |
| L2                | MAC address                                 | 8K                    | 8K          | 8K                    | 8K                    | 8K                    | 8K          | 8K             |
|                   | 802.1D STP, 802.1w RSTP, 802.1s MSTP        | 802.1D, 802.1w        | *           | *                     | *                     | 802.1D, 802.1w        | *           | 802.1D, 802.1w |
|                   | 802.3ad, 802.1AX link aggregation           | *                     | *           | *                     | *                     | *                     | *           | *              |
| VLAN              | VLAN group (max static)                     | 256                   | 256         | 256                   | 256                   | 256                   | 256         | 256            |
|                   | Port / MAC / protocol-based VLAN, GVRP      | Port                  | Port        | Port                  | Port                  | Port                  | Port        | Port           |
|                   | Asymmetric VLAN                             | *                     | *           | *                     | *                     | *                     | *           | *              |
|                   | Auto Voice/Surveillance VLAN                | *                     | *           | *                     | *                     | *                     | *           | *              |
| L3                | IP interfaces                               |                       | 4           | 4                     | 4                     |                       | 4           |                |
|                   | IPv6 support                                |                       | *           | *                     | *                     | *                     | *           | *              |
|                   | Static route for IPv4/IPv6                  |                       | 124/50      | 124/50                | 124/50                |                       | 124/50      |                |
| QoS               | Number of queues per port                   | 8                     | 8           | 8                     | 8                     | 8                     | 8           | 8              |
|                   | CoS based on contents                       | *                     | *           | *                     | *                     | *                     | *           | *              |
|                   | Bandwidth control (min. granularity)        | • (16 Kbps)           | • (16 Kbps) | • (16 Kbps)           | • (16 Kbps)           | • (16 Kbps)           | • (16 Kbps) | • (16 Kbps)    |
| SURVEILLANCE MODE | Video Surveillance Mode                     | *                     | *           | *                     | *                     | *                     | *           | *              |
|                   | ONVIF Device Discovery                      | *                     | *           | *                     | *                     | *                     | *           | *              |
|                   | Video Surveillance Topology                 | *                     | *           | *                     | *                     | *                     | *           | *              |
|                   | Video Surveillance Device Information       | *                     | *           | *                     | *                     | *                     | *           | *              |
| ACL               | ACL (Ingress / Egress / VLAN-based ACL)     | • (Ingress)           | • (Ingress) | • (Ingress)           | • (Ingress)           | • (Ingress)           | • (Ingress) | • (Ingress)    |
|                   | Based on packet contents                    | *                     | *           | *                     | *                     | *                     | *           | *              |
| SECURITY          | SSH, SSL (v1/v2/v3)                         | *                     | *           | *                     | *                     | *                     | *           | *              |
|                   | IP-MAC-port binding (IMPB)                  | *                     | *           | *                     | *                     | *                     | *           | *              |
|                   | ARP spoofing                                | *                     | *           | *                     | *                     | *                     | *           | *              |
| AAA               | 802.1X access control                       | *                     | *           | *                     | *                     | *                     | *           | *              |
|                   | RADIUS                                      | *                     | *           | *                     | *                     | *                     | *           | *              |
| MANAGEMENT        | Dual image                                  | *                     | *           | *                     | *                     | *                     | *           | *              |
|                   | SNMP (v1/v2c/v3), RMON v1                   | *                     | *           | *                     | *                     | *                     | *           | *              |
|                   | LLDP-MED                                    | *                     | *           | *                     | *                     | *                     | *           | *              |
|                   | ICMPv6                                      | *                     | *           | *                     | *                     | *                     | *           | *              |
|                   | Command Line Interface (CLI)                |                       | Compact     | Compact               | Compact               |                       | Compact     |                |
|                   | Nuclias Connect                             | *                     | *           | *                     | *                     | *                     | *           |                |



# Smart Gigabit with 10G uplinks



|                   |   | Gigabit Ethernet |             |                        |                        |             |                        | Gigabit Ethernet with 10G Uplink |                       |                  |                       |
|-------------------|---|------------------|-------------|------------------------|------------------------|-------------|------------------------|----------------------------------|-----------------------|------------------|-----------------------|
| MODEL             |   | DGS-1210-26      | DGS-1210-28 | DGS-1210-28P           | DGS-1210-28MP          | DGS-1210-52 | DGS-1210-52MP          | DGS-1250-28X                     | DGS-1250-28XMP        | DGS-1250-52X     | DGS-1250-52XMP        |
| HARDWARE          | Number of 10/100/1000BASE-T ports           | 24               | 24          | 24                     | 24                     | 48          | 48                     | 24                               | 24                    | 48               | 48                    |
|                   | Number of Combo 10/100/1000BASE-T/SFP ports |                  | 4           | 4                      | 4                      | 4           | 4                      |                                  |                       |                  |                       |
|                   | Number of 100/1000 Mbps SFP ports           | 2                |             |                        |                        |             |                        |                                  |                       |                  |                       |
|                   | Number of 10G SFP+ ports                    |                  |             |                        |                        |             |                        | 4                                | 4                     | 4                | 4                     |
|                   | Switching capacity                          | 52 Gbps          | 56 Gbps     | 56 Gbps                | 56 Gbps                | 104 Gbps    | 104 Gbps               | 128 Gbps                         | 128 Gbps              | 176 Gbps         | 176 Gbps              |
|                   | PoE standards                               |                  |             | 802.3af, 802.3at       | 802.3af, 802.3at       |             | 802.3af, 802.3at       |                                  | 802.3af, 802.3at      |                  | 802.3af, 802.3at      |
|                   | PoE power budget                            |                  |             | 193 W                  | 370 W                  |             | 370 W                  |                                  | 370 W                 |                  | 370 W                 |
|                   | PoE capable ports                           |                  |             | Ports 1-24, up to 30 W | Ports 1-24, up to 30 W |             | Ports 1-48, up to 30 W |                                  | Port 1-24, up to 30 W |                  | Port 1-48, up to 30 W |
|                   | Perpetual PoE                               |                  |             | •                      | •                      |             | •                      |                                  |                       |                  | •                     |
|                   | Fanless                                     | •                | •           |                        |                        |             |                        |                                  |                       |                  |                       |
|                   | Smart fan                                   |                  |             | •                      | •                      | •           | •                      | •                                | •                     | •                | •                     |
|                   | D-Link Green                                | •                | •           | •                      | •                      | •           | •                      | •                                | •                     | •                | •                     |
| 802.3az EEE       | •   | •                | •           | •                      | •                      | •           | •                      | •                                | •                     | •                |                       |
| Power supply type | Internal                                    | Internal         | Internal    | Internal               | Internal               | Internal    | Internal               | Internal                         | Internal              | Internal         |                       |
| L2                | MAC address                                 | 8K               | 8K          | 8K                     | 8K                     | 16K         | 16K                    | 16K                              | 16K                   | 32K              | 32K                   |
|                   | 802.1D STP, 802.1w RSTP, 802.1s MSTP        | •                | •           | •                      | •                      | •           | •                      | •                                | •                     | •                | •                     |
|                   | 802.3ad, 802.1AX link aggregation           | •                | •           | •                      | •                      | •           | •                      | • (802.3ad only)                 | • (802.3ad only)      | • (802.3ad only) | • (802.3ad only)      |
| VLAN              | VLAN group (max static)                     | 256              | 256         | 256                    | 256                    | 256         | 256                    | 4K                               | 4K                    | 4K               | 4K                    |
|                   | Port / MAC / protocol-based VLAN, GVRP      | Port             | Port        | Port                   | Port                   | Port        | Port                   | Port                             | Port                  | Port             | Port                  |
|                   | Asymmetric VLAN                             | •                | •           | •                      | •                      | •           | •                      | •                                | •                     | •                | •                     |
|                   | Auto Voice/Surveillance VLAN                | •                | •           | •                      | •                      | •           | •                      | •                                | •                     | •                | •                     |
| L3                | IP interfaces                               | 4                | 4           | 4                      | 4                      | 4           | 4                      | 4                                | 4                     | 4                | 4                     |
|                   | IPv6 support                                | •                | •           | •                      | •                      | •           | •                      | •                                | •                     | •                | •                     |
|                   | Static route for IPv4/IPv6                  | 124/50           | 124/50      | 124/50                 | 124/50                 | 124/50      | 124/50                 | 124/50                           | 124/50                | 124/50           | 124/50                |
| QoS               | Number of queues per port                   | 8                | 8           | 8                      | 8                      | 8           | 8                      | 8                                | 8                     | 8                | 8                     |
|                   | CoS based on contents                       | •                | •           | •                      | •                      | •           | •                      | •                                | •                     | •                | •                     |
|                   | Bandwidth control (min. granularity)        | • (16 Kbps)      | • (16 Kbps) | • (16 Kbps)            | • (64 Kbps)            | • (16 Kbps) | • (16 Kbps)            | • (16 Kbps)                      | • (16 Kbps)           | • (16 Kbps)      | • (16 Kbps)           |
| SURVEILLANCE MODE | Video Surveillance Mode                     | •                | •           | •                      | •                      | •           | •                      |                                  |                       |                  |                       |
|                   | ONVIF Device Discovery                      | •                | •           | •                      | •                      | •           | •                      |                                  |                       |                  |                       |
|                   | Video Surveillance Topology                 | •                | •           | •                      | •                      | •           | •                      |                                  |                       |                  |                       |
|                   | Video Surveillance Device Information       | •                | •           | •                      | •                      | •           | •                      |                                  |                       |                  |                       |
| ACL               | ACL (Ingress / Egress / VLAN-based ACL)     | • (Ingress)      | • (Ingress) | • (Ingress)            | • (Ingress)            | • (Ingress) | • (Ingress)            | • (Ingress)                      | • (Ingress)           | • (Ingress)      | • (Ingress)           |
|                   | Based on packet contents                    | •                | •           | •                      | •                      | •           | •                      |                                  |                       |                  |                       |
| SECURITY          | SSH, SSL (v1/v2/v3)                         | •                | •           | •                      | •                      | •           | •                      | • (SSH)                          | • (SSH)               | • (SSH)          | • (SSH)               |
|                   | IP-MAC-port binding (IMPB)                  | •                | •           | •                      | •                      | •           | •                      | •                                | •                     | •                | •                     |
|                   | ARP spoofing                                | •                | •           | •                      | •                      | •           | •                      | •                                | •                     | •                | •                     |
| AAA               | 802.1X access control                       | •                | •           | •                      | •                      | •           | •                      | •                                | •                     | •                | •                     |
|                   | RADIUS                                      | •                | •           | •                      | •                      | •           | •                      | •                                | •                     | •                | •                     |
|                   | Dual image                                  | •                | •           | •                      | •                      | •           | •                      | •                                | •                     | •                | •                     |
| MANAGEMENT        | SNMP (v1/v2c/v3), RMON v1                   | •                | •           | •                      | •                      | •           | •                      | •                                | •                     | •                | •                     |
|                   | LLDP-MED                                    | •                | •           | •                      | •                      | •           | •                      | •                                | •                     | •                | •                     |
|                   | ICMPv6                                      | •                | •           | •                      | •                      | •           | •                      | •                                | •                     | •                | •                     |
|                   | Command Line Interface (CLI)                | Compact          | Compact     | Compact                | Compact                | Compact     | Compact                | Full                             | Full                  | Full             | Full                  |
|                   | Console port                                |                  |             |                        |                        |             |                        | RJ45                             | RJ45                  | RJ45             | RJ45                  |
|                   | Nuclias Connect                             | •                | •           | •                      | •                      | •           | •                      |                                  |                       |                  |                       |



# SWITCHES

Smart Pro with  
10G Uplinks  
Stackable

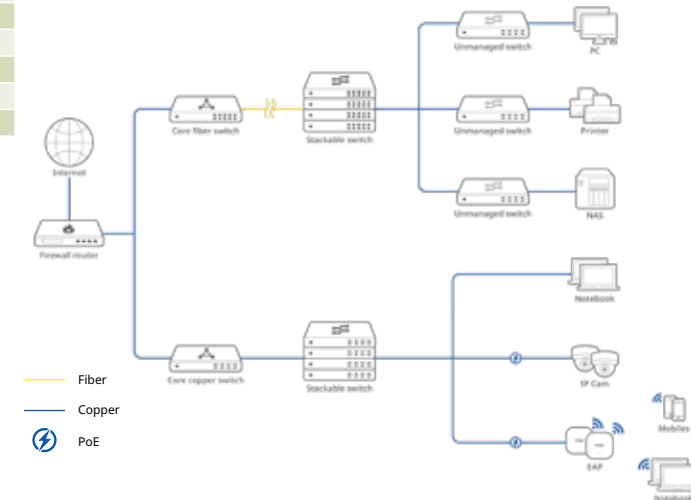
## Gigabit Ethernet with 10G Uplinks



|                         | MODEL                                      | DGS-1530-20   | DGS-1530-28           | DGS-1530-28P | DGS-1530-28S | DGS-1530-52           | DGS-1530-52P         |
|-------------------------|--|---|-----------------------|--------------|--------------|-----------------------|----------------------|
| HARDWARE                | Number of 10/100/1000BASE-T ports          | 16  | 24                    | 24           |              | 48                    | 48                   |
|                         | Number of 1000Mbps SFP ports               |   |                       |              | 24           |                       |                      |
|                         | Number of 10G SFP+ ports                   | 4   | 4                     | 4            | 4            | 4                     | 4                    |
|                         | Physical stacking (device / max Bandwidth) | • (9/80G)   | • (9/80G)             | • (9/80G)    | • (9/80G)    | • (9/80G)             | • (9/80G)            |
|                         | Switching capacity                         | 112 Gbps  | 128 Gbps              | 128 Gbps     | 128 Gbps     | 176 Gbps              | 176 Gbps             |
|                         | Maximum Packet Forwarding Rate             | 83.33 Mpps  | 95.24 Mpps            | 95.24 Mpps   | 95.24 Mpps   | 130.95 Mpps           | 130.95 Mpps          |
|                         | PoE power budget                           |   |                       | 370 W        |              |                       | 370 W (740 with RPS) |
| PoE capable ports Ports |  |   | Port 1-24, up to 30 W |              |              | Port 1-48, up to 30 W |                      |
| L2                      | MAC address                                | 16K   | 16K                   | 16K          | 16K          | 16K                   | 16K                  |
|                         | 802.1D STP, 802.1w RSTP, 802.1s MSTP       | •   | •                     | •            | •            | •                     | •                    |
|                         | 802.3ad, 802.1AX link aggregation          | •   | •                     | •            | •            | •                     | •                    |
|                         | Ethernet ring protection switching (ERPS)  | •   | •                     | •            | •            | •                     | •                    |
| VLAN                    | VLAN group (max static)                    | 4K  | 4K                    | 4K           | 4K           | 4K                    | 4K                   |
|                         | IP interfaces                              | 64  | 64                    | 64           | 64           | 64                    | 64                   |
| L3                      | Static route for IPv4/IPv6                 | 64/32   | 64/32                 | 64/32        | 64/32        | 64/32                 | 64/32                |
|                         | Number of queues per port                  | 8   | 8                     | 8            | 8            | 8                     | 8                    |
| QoS                     | Bandwidth control (min. granularity)       | • (64 Kbps)   | • (64 Kbps)           | • (64 Kbps)  | • (64 Kbps)  | • (64 Kbps)           | • (64 Kbps)          |
|                         | Command Line Interface (CLI)               | Full  | Full                  | Full         | Full         | Full                  | Full                 |
| MAN                     | Console port                               | RJ-45   | RJ-45                 | RJ-45        | RJ-45        | RJ-45                 | RJ-45                |
|                         | Acoustic (Max)                             | Fanless   | 40.9 dB(A)            | 54.7 dB(A)   | 52.4 dB(A)   | 54.7 dB(A)            | 52.7 dB(A)           |
| PHYSICAL                | Power Surge Protection                     | All Ethernet RJ-45 ports support IEC61000-4-5 6 kV surge protection (Except DGS-1530-28S/E) |                       |              |              |                       |                      |
|                         | Redundant Power Supply                     | DPS-500A  | DPS-500A              |              | DPS-500A     | DPS-500A              | DPS-700              |



Explore the possibilities





SWITCHES

Layer 3 Managed  
Gigabit/2.5G with  
10G/25G Uplinks

Gigabit Ethernet with 10G Uplinks | 2.5G Multigigabit Ethernet with 25G Uplinks



| MODEL                                       | DGS-3130-30TS           | DGS-3130-30PS  | DGS-3130-30S            | DGS-3130-54TS           | DGS-3130-54PS  | DGS-3130-54S            | DMS-3130-30PS  |
|---|-------------------------|--|-------------------------|-------------------------|--|-------------------------|--|
| <b>HARDWARE</b>                             |                         |  |                         |                         |  |                         |  |
| Number of 10/100/1000BASE-T ports           | 24                      | 24   |                         | 48                      | 48   |                         |  |
| Number of Gigabit SFP ports                 |                         |  | 24                      |                         |  | 48                      |  |
| Number of 100/1000/2.5GBASE-T ports         |                         |  |                         |                         |  |                         | 16   |
| Number of 100/1000/2.5G/5GBASE-T ports      |                         |  |                         |                         |  |                         | 8  |
| Number of 100/1000/2.5G/5G/10GBASE-T ports  |                         |  |                         |                         |  |                         | 2  |
| Number of 10GBASE-T ports                   | 2                       | 2  | 2                       | 2                       | 2  | 2                       |  |
| Number of 10G SFP+ ports                    | 4                       | 4  | 4                       | 4                       | 4  | 4                       |  |
| Number of 10G SFP+/25G SFP28 ports          |                         |  |                         |                         |  |                         | 4  |
| Switching capacity                          | 168 Gbps                | 168 Gbps   | 168 Gbps                | 216 Gbps                | 216 Gbps   | 216 Gbps                | 400 Gbps   |
| PoE standards                               |                         | 802.3af, 802.3at                                       |                         |                         | 802.3af, 802.3at                                       |                         | 802.3af, 802.3at, 802.3bt                              |
| PoE power budget                            |                         | 370 W (740 W with RPS)                                 |                         |                         | 370 W (740 W with RPS)                                 |                         | 740 W (960 W with RPS)                                 |
| PoE capable ports                           |                         | Ports 1-24, up to 30 W (with Perpetual PoE / Fast PoE) |                         |                         | Ports 1-48, up to 30 W (with Perpetual PoE / Fast PoE) |                         | Ports 1-16, up to 30 W (with Perpetual PoE / Fast PoE) |
| Power supply type                           | Internal                | Internal   | Internal                | Internal                | Internal   | Internal                | Internal   |
| Physical stacking (device / max bandwidth)  | • (9 <sup>2</sup> /80G) | • (9 <sup>2</sup> /80G)                                | • (9 <sup>2</sup> /80G) | • (9 <sup>2</sup> /80G) | • (9 <sup>2</sup> /80G)                                | • (9 <sup>2</sup> /80G) | • (9/200G)   |
| Virtual stacking (device)                   | • (32)                  | • (32)   | • (32)                  | • (32)                  | • (32)   | • (32)                  | • (32)   |
| <b>L2</b>                                   |                         |  |                         |                         |  |                         |  |
| MAC address                                 | Up to 16K               | Up to 16K  | Up to 16K               | Up to 16K               | Up to 16K  | Up to 16K               | Up to 32K  |
| 802.1D STP, 802.1w RSTP, 802.1s MSTP        | •                       | •  | •                       | •                       | •  | •                       | •  |
| Ethernet ring protection switching (ERPS)   | •                       | •  | •                       | •                       | •  | •                       | •  |
| 802.3ad, 802.1AX link aggregation           | •                       | •  | •                       | •                       | •  | •                       | •  |
| <b>VLAN</b>                                 |                         |  |                         |                         |  |                         |  |
| VLAN group (max static)                     | 4K                      | 4K   | 4K                      | 4K                      | 4K   | 4K                      | 4K   |
| Port / MAC / protocol-based VLAN, GVRP      | •                       | •  | •                       | •                       | •  | •                       | •  |
| Asymmetric, Private, ISM, Super, Voice VLAN | •                       | •  | •                       | •                       | •  | •                       | •  |
| <b>L3</b>                                   |                         |  |                         |                         |  |                         |  |
| IPv4/IPv6 routing table                     | 1024 / 512              | 1024 / 512   | 1024 / 512              | 1024 / 512              | 1024 / 512   | 1024 / 512              | 1024 / 512   |
| IPv4/IPv6 forwarding table                  | 2048 / 1024             | 2048 / 1024  | 2048 / 1024             | 2048 / 1024             | 2048 / 1024  | 2048 / 1024             | 2048 / 1024  |
| IP interfaces                               | 16                      | 16   | 16                      | 16                      | 16   | 16                      | 128  |
| IPv6 neighbour discovery (ND)               | •                       | •  | •                       | •                       | •  | •                       | •  |
| Static route for IPv4/IPv6                  | 512 / 256               | 512 / 256  | 512 / 256               | 512 / 256               | 512 / 256  | 512 / 256               | 512 / 256  |
| VRRP  | •                       | •  | •                       | •                       | •  | •                       | •  |
| Multicasting                                | •                       | •  | •                       | •                       | •  | •                       | •  |
| RIP v1/v2, RIPng, OSPFv2/v3                 | •                       | •  | •                       | •                       | •  | •                       | •  |
| <b>QoS</b>                                  |                         |  |                         |                         |  |                         |  |
| Number of queues per port                   | 8                       | 8  | 8                       | 8                       | 8  | 8                       | 8  |
| CoS based on contents                       | •                       | •  | •                       | •                       | •  | •                       | •  |
| Bandwidth control (min. granularity)        | • (8Kbps)               | • (8Kbps)  | • (8Kbps)               | • (8Kbps)               | • (8Kbps)  | • (8Kbps)               | • (8Kbps)  |
| Single/two rate Three Colour Marker         | •                       | •  | •                       | •                       | •  | •                       | •  |
| <b>ACL</b>                                  |                         |  |                         |                         |  |                         |  |
| ACL (Ingress / Egress / VLAN-based)         | •                       | •  | •                       | •                       | •  | •                       | •  |
| Based on packet contents                    | •                       | •  | •                       | •                       | •  | •                       | •  |
| <b>SECURITY</b>                             |                         |  |                         |                         |  |                         |  |
| SSH, SSL (v1/v2/v3)                         | •                       | •  | •                       | •                       | •  | •                       | •  |
| IP-MAC-port binding (IMPB)                  | •                       | •  | •                       | •                       | •  | •                       | •  |
| ARP spoofing, BPDU attack protection        | •                       | •  | •                       | •                       | •  | •                       | •  |
| <b>AAA</b>                                  |                         |  |                         |                         |  |                         |  |
| 802.1X access control, Microsoft NAP        | •                       | •  | •                       | •                       | •  | •                       | •  |
| RADIUS/TACACS+ authentication               | •                       | •  | •                       | •                       | •  | •                       | •  |
| <b>MANAGEMENT</b>                           |                         |  |                         |                         |  |                         |  |
| SNMP (v1/v2c/v3), RMON v1/v2, sFlow         | •                       | •  | •                       | •                       | •  | •                       | •  |
| LLDP-MED                                    | •                       | •  | •                       | •                       | •  | •                       | •  |
| 802.3ah, 802.1ag, ITU-T Y.1731              | •                       | •  | •                       | •                       | •  | •                       | •  |
| Command Line Interface (CLI)                | Full                    | Full   | Full                    | Full                    | Full   | Full                    | Full   |
| Out-of-Band Console/Management port         | RJ45                    | RJ45   | RJ45                    | RJ45                    | RJ45   | RJ45                    | RJ45   |

<sup>2</sup> Lors de l'empilage des modèles DGS-3130-30TS/E/30S/E/30PS/E, le coût d'empilage est de 1 point par unité, le nombre maximum d'unités par pile est donc de 9.  
Lors de l'empilage des modèles DGS-3130-54TS/E/54S/E/54PS/E, le coût d'empilage est de 2 points par unité, de sorte que le nombre maximum d'unités par pile est de 6.  
Lors de l'empilage de différents modèles DGS-3130/E dans la même pile, les switches peuvent être empilés jusqu'à un maximum de 12 points par pile.

SWITCHES

Layer 3 Managed Gigabit with 10G Uplinks

Gigabit Ethernet with 10G Uplinks



| MODEL                                      | DGS-3630-28TC/SI         | DGS-3630-28PC/SI         | DGS-3630-28SC/SI         | DGS-3630-52TC/SI         | DGS-3630-52PC/SI         |
|--|--------------------------|--------------------------|--------------------------|--------------------------|--------------------------|
| <b>HARDWARE</b>                            |                          |                          |                          |                          |                          |
| Number of Gigabit ports                    | 20                       | 20                       | 20                       | 44                       | 44                       |
| Number of Combo 1000BASE-T/SFP ports       | 4                        | 4                        | 4                        | 4                        | 4                        |
| Number of SFP ports                        |                          |                          | 20                       |                          |                          |
| Number of 10G SFP+ ports                   | 4                        | 4                        | 4                        | 4                        | 4                        |
| Switching capacity                         | 128 Gbps                 | 128 Gbps                 | 128 Gbps                 | 176 Gbps                 | 176 Gbps                 |
| PoE standards                              |                          | 802.3af, 802.3at         |                          |                          | 802.3af, 802.3at         |
| PoE power budget                           |                          | 370 W (740 W with RPS)   |                          |                          | 370 W (740 W with RPS)   |
| PoE capable ports                          |                          | Ports 1-24, up to 30 W   |                          |                          | Ports 1-48, up to 30 W   |
| Power supply type                          | Internal                 | Internal                 | Internal                 | Internal                 | Internal                 |
| Physical stacking (device / max bandwidth) | • (9/80G)                | • (9/80G)                | • (9/80G)                | • (9/80G)                | • (9/80G)                |
| Virtual stacking (device)                  | • (32)                   | • (32)                   | • (32)                   | • (32)                   | • (32)                   |
| Switch Resource Management                 | IP / LAN / L2 VPN modes  | IP / LAN / L2 VPN modes  | IP / LAN / L2 VPN modes  | IP / LAN / L2 VPN modes  | IP / LAN / L2 VPN modes  |
| <b>L2</b>                                  |                          |                          |                          |                          |                          |
| MAC address                                | Up to 68K                | Up to 68K                | Up to 68K                | Up to 68K                | Up to 68K                |
| 802.1D STP, 802.1w RSTP, 802.1s MSTP       | •                        | •                        | •                        | •                        | •                        |
| Ethernet ring protection switching (ERPS)  | • (ERPSv2)               | • (ERPSv2)               | • (ERPSv2)               | • (ERPSv2)               | • (ERPSv2)               |
| 802.3ad, 802.1AX link aggregation          | •                        | •                        | •                        | •                        | •                        |
| <b>VLAN</b>                                |                          |                          |                          |                          |                          |
| VLAN group (max static)                    | 4K                       | 4K                       | 4K                       | 4K                       | 4K                       |
| Port / MAC / protocol-based VLAN, GVRP     | •                        | •                        | •                        | •                        | •                        |
| Port-based, selective double VLAN          | •                        | •                        | •                        | •                        | •                        |
| ISM, Super, Voice VLAN                     | ISM/ Voice VLAN          | ISM/ Voice VLAN          | ISM/ Voice VLAN          | ISM/ Voice VLAN          | ISM/ Voice VLAN          |
| DCB - 802.1Qbb, 802.1Qaz                   | 802.1Qbb (10G port only) | 802.1Qbb (10G port only) | 802.1Qbb (10G port only) | 802.1Qbb (10G port only) | 802.1Qbb (10G port only) |
| <b>L3</b>                                  |                          |                          |                          |                          |                          |
| IPv4/IPv6 routing table                    | 16K / 8K                 | 16K / 8K                 | 16K / 8K                 | 16K / 8K                 | 16K / 8K                 |
| IPv4/IPv6 forwarding table                 | 32K / 16K                | 32K / 16K                | 32K / 16K                | 32K / 16K                | 32K / 16K                |
| IP interfaces                              | 256                      | 256                      | 256                      | 256                      | 256                      |
| Static route for IPv4/IPv6                 | 512 / 256                | 512 / 256                | 512 / 256                | 512 / 256                | 512 / 256                |
| IPv6 tunneling                             |                          |                          |                          |                          |                          |
| Multicasting                               | •                        | •                        | •                        | •                        | •                        |
| PIM-DM/SM, DVMRPv3                         |                          |                          |                          |                          |                          |
| RIP v1/v2, RIPng                           | •                        | •                        | •                        | •                        | •                        |
| OSPFv2/v3, BGP4/BGP4                       |                          |                          |                          |                          |                          |
| IS-IS, IS-ISv6                             |                          |                          |                          |                          |                          |
| MPLS, VPLS                                 |                          |                          |                          |                          |                          |
| <b>QOS</b>                                 |                          |                          |                          |                          |                          |
| Number of queues per port                  | 8                        | 8                        | 8                        | 8                        | 8                        |
| CoS based on contents                      | •                        | •                        | •                        | •                        | •                        |
| Bandwidth control (min. granularity)       | • (8Kbps)                | • (8Kbps)                | • (8Kbps)                | • (8Kbps)                | • (8Kbps)                |
| Single/two rate Three Colour Marker        | •                        | •                        | •                        | •                        | •                        |
| <b>ACL</b>                                 |                          |                          |                          |                          |                          |
| ACL (Ingress / Egress / VLAN-based)        | •                        | •                        | •                        | •                        | •                        |
| Based on packet contents                   | •                        | •                        | •                        | •                        | •                        |
| <b>SECURITY</b>                            |                          |                          |                          |                          |                          |
| SSH, SSL (v1/v2/v3)                        | •                        | •                        | •                        | •                        | •                        |
| IP-MAC-port binding (IMPB)                 | •                        | •                        | •                        | •                        | •                        |
| ARP spoofing, BPDU attack protection       | •                        | •                        | •                        | •                        | •                        |
| <b>AAA</b>                                 |                          |                          |                          |                          |                          |
| 802.1X access control, Microsoft NAP       | •                        | •                        | •                        | •                        | •                        |
| RADIUS/TACACS+ authentication              | •                        | •                        | •                        | •                        | •                        |
| <b>MANAGEMENT</b>                          |                          |                          |                          |                          |                          |
| SNMP (v1/v2c/v3), RMON v1/v2, sFlow        | •                        | •                        | •                        | •                        | •                        |
| LLDP-MED                                   | •                        | •                        | •                        | •                        | •                        |
| ICMPv6                                     | •                        | •                        | •                        | •                        | •                        |
| 802.3ah, 802.1ag, ITU-T Y.1731             | •                        | •                        | •                        | •                        | •                        |
| Command Line Interface (CLI)               | Full                     | Full                     | Full                     | Full                     | Full                     |
| Out-of-Band Console/Management port        | RJ45                     | RJ45                     | RJ45                     | RJ45                     | RJ45                     |

Datacenter  
10/40/100G  
Layer 3

10/40/100G Gigabit Ethernet



| MODEL  | DXS-3410-32XY                               | DXS-3410-32SY                               | DXS-3130-28P   | DXS-3610-54S/SI         |
|--|---|---|--|-------------------------|
| Number of 100/1000/2.5/5/10GBASE-T ports                 | 24  |   | 24 (PoE++ 60W)                                       |                         |
| Number of 10G SFP+ ports                                 | 4   | 28  |  | 48                      |
| Number of 10G SFP+/25G SFP28 ports                       | 4   | 4   | 4  |                         |
| Number of 40G QSFP+/100G QSFP28 ports                    |   |   |  | 6                       |
| Switching capacity                                       | 760 Gbps                                    | 760 Gbps                                    | 680 Gbps   | 2.16 Tbps               |
| Power supply redundancy                                  | • Optional DPS-500A<br>• Optional DPS-500DC | • Optional DPS-500A<br>• Optional DPS-500DC | • Optional DPS-PWR1200AC<br>• Optional DPS-PWR1200DC | 1+1                     |
| Physical stacking (device / max bandwidth)               | • (9/200G)                                  | • (9/200G)                                  | • (9/200G)   | • (12/1200G) / MLAG     |
| Virtual stacking (device)                                | • (32)                                      | • (32)                                      | • (32)   | • (32)                  |
| MAC address  | 32K   | 32K   | 32K  | Up to 288K              |
| 802.1D STP, 802.1w RSTP, 802.1s MSTP                     | •   | •   | •  | •                       |
| Ethernet ring protection switching (ERPS)                | •   | •   | •  | •                       |
| 802.3ad, 802.1AX Link Aggregation                        | • (802.1AX/802.3ad)                         | • (802.1AX/802.3ad)                         | • (802.1AX/802.3ad)                                  | • (802.1AX only)        |
| VLAN group (max static)                                  | 4K  | 4K  | 4K   | 4K                      |
| Port / MAC / protocol-based VLAN, GVRP                   | •   | •   | •  | •                       |
| Port-based, selective double VLAN                        | •   | •   | •  | •                       |
| Multicast VLAN, ISM, Super, Voice VLAN                   | •   | •   | •  | • (Super/ISM VLAN)      |
| Asymmetric VLAN  | •   | •   | •  | •                       |
| OpenFlow   |   |   |  | v1.3                    |
| DCB - 802.1Qbb, 802.1Qaz                                 | • (802.1Qbb)                                | • (802.1Qbb)                                |  | • (802.1Qbb)            |
| IPv4/IPv6 routing table                                  | 12K shared by IPv4/IPv6                     | 12K shared by IPv4/IPv6                     | 1K shared by IPv4/IPv6                               | 32K / 16K               |
| IPv4/IPv6 forwarding table                               | 16K / 8K                                    | 16K / 8K                                    | 16K IPv4 / 8K IPv6                                   | 144K / 72K              |
| IP interfaces  | 256   | 256   | 128  | 256                     |
| Static route for IPv4/IPv6                               | 256 / 128                                   | 256 / 128                                   | 512 / 256  | 1K / 512                |
| IPv6 tunneling   |   |   |  | •                       |
| Multicasting   | •   | •   | •  | • (/EI)                 |
| PIM-DM/SM, DVMRPv3                                       | • PIM-SM for IPv4                           | • PIM-SM for IPv4                           | • PIM-SM for IPv4                                    | • (/EI)                 |
| MPLS, VPLS   |   |   |  | • (MPLS, VPLS with /EI) |
| Dynamic Routing: OSPFv2/v3, BGP4/BGP4+, RIP v1/v2, RIPng | • OSPFv2/v3, RIP v1/v2, RIPng               | • OSPFv2/v3, RIP v1/v2, RIPng               | • OSPFv2/v3, RIP v1/v2, RIPng                        | • (BGP4/BGP4+ with /EI) |
| Number of queues per port                                | 8   | 8   | 8  | 8                       |
| CoS based on contents                                    | •   | •   | •  | •                       |
| Bandwidth control (min. granularity)                     | • (8Kbps)                                   | • (8Kbps)                                   | • (8Kbps)  | • (8Kbps)               |
| Single/two rate Three Color Marker                       | •   | •   | •  | •                       |
| ACL (Ingress / Egress / VLAN-based)                      | •   | •   | •  | •                       |
| Based on packet contents                                 | •   | •   | •  | •                       |
| SSH, SSL (v1/v2/v3)                                      | •   | •   | •  | •                       |
| IP-MAC-port binding (IPMB)                               | •   | •   | •  | •                       |
| ARP spoofing, BPDU attack protection                     | •   | •   | •  | •                       |
| 802.1X access control, Microsoft NAP                     | •   | •   | •  | •                       |
| RADIUS/TACACS+ authentication                            | •   | •   | •  | •                       |
| SNMP (v1/v2c/v3), RMON v1/v2, sFlow                      | •   | •   | •  | •                       |
| LLDP-MED   | •   | •   | •  | •                       |
| ICMPv6   | •   | •   | •  | •                       |
| 802.3ah, 802.1ag, ITU-T Y.1731                           | •   | •   | •  | •                       |
| Command Line Interface (CLI)                             | Full  | Full  | Full   | Full                    |
| Out-of-Band Console/Management port                      | RJ45  | RJ45  | RJ45   | RJ45                    |

# D-View 8 (DV-800)



Advanced network management solution based on SNMP. Intelligent monitoring of large Switching and Wireless topologies. Smart analysis and alerts for incident prevention. Supports up to 5,000 devices and multi-site capability. Easy discovery of switches, Wi-Fi access points, and other devices via SNMP.



**Real-time network monitoring**



**VLAN and L3 topologies**



**sFlow Analyser (Enterprise version only)**



**Installable on Windows and Linux**



**Role-based management**



**Batch Configuration**



**Intuitive and customisable interface**



**Scheduled firmware updates**



**Centralised reporting**



**Local or remote management (Enterprise version)**



**Centralised management**

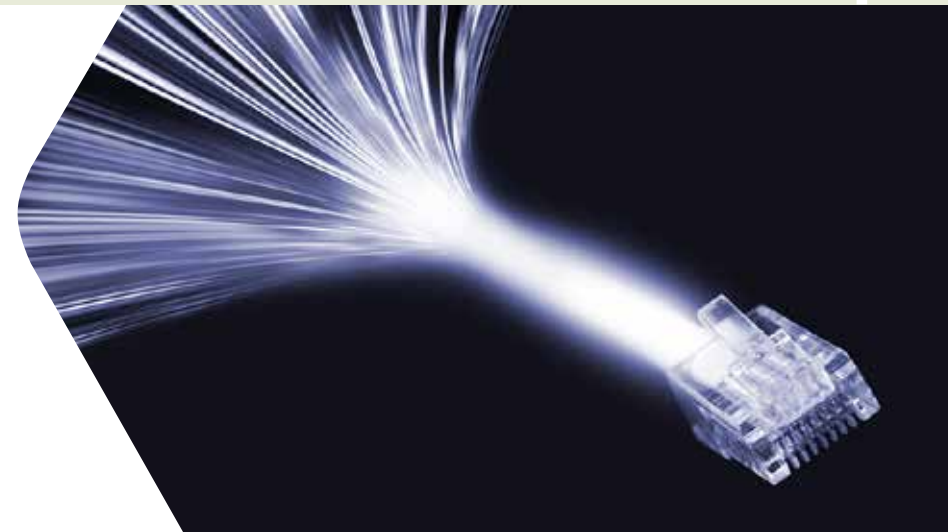
Download a 90-day trial version here:

[dview.dlink.com](http://dview.dlink.com)

SWITCHES

# Power Over Ethernet

PoE (Power over Ethernet) technology uses standard Ethernet LAN cabling to power and transmit data to devices such as Wi-Fi access points, cameras, or IP phones. This technology is constantly evolving, and the range of PoE products is expanding daily, including LED lighting, laptops, displays, smart building control, Smart Cities applications, Industry 4.0, IoT, and more.



We offer the widest portfolio of PoE switches compliant with IEEE 802.3af (15.4W per port), IEEE 802.3at (30W per port), and IEEE 802.3bt (up to 90W per port) standards. By using standardised technologies and avoiding proprietary PoE solutions, we ensure interoperability in any installation—not only between our solutions but also with third-party PoE devices.

Our Wi-Fi access points are also PoE-compliant to ensure compatibility, which is essential for any network deployment.

If a network already includes non-PoE switches or requires extended connections, our PoE injectors, splitters, and extenders provide a seamless solution.

## Surveillance Switches

GIGABIT ETHERNET SMART MANAGED



| MODEL                                     | DSS-200G-10MPP                      | DSS-200G-28MPP                                  |
|---|-------------------------------------|---|
| Number of 10/100BASE-TX ports             | 8                                   | 24  |
| Number of 10/100/1000BASE-T ports         | 2                                   | 4   |
| Number of 100/1000 Mbps SFP ports         | 20 Gbps                             | 56 Gbps   |
| Number of Combo 1000BASE-T/SFP ports      | 802.3af, 802.3at, 802.3bt           | 802.3af, 802.3at, 802.3bt                       |
| Switching capacity                        | 242 W                               | 517 W   |
| PoE standards                             | Ports 1-8, up to 90 W               | Ports 1-8, up to 90 W<br>Ports 9-24, up to 30 W |
| PoE power budget                          | •                                   | •   |
| PoE capable ports                         | Up to 250 m*                        | Up to 250 m*                                    |
| PoE usage indicator LED                   | QoS, extend, isolate, PD-alive, STP | QoS, extend, isolate, PD-alive, STP             |
| Extended PoE range                        | •                                   | •   |
| DIP switch modes                          | •                                   | •   |
| 6kV Surge protection                      | •                                   | •   |
| Metal enclosure                           | •                                   | •   |
| Fanless                                   | •                                   | •   |
| Alarm port                                | Internal                            | Internal  |
| Power supply type                         | 8K                                  | 8K  |
| MAC address                               | •                                   | •   |
| 802.1D STP, 802.1w RSTP                   | •                                   | •   |
| 802.3ad link aggregation                  | •                                   | •   |
| Ethernet ring protection switching (ERPS) | 128                                 | 128   |
| VLAN group (max static)                   | •                                   | •   |
| Port-based VLAN, Asymmetric VLAN          | •                                   | •   |
| Auto Voice/Surveillance VLAN              | 4                                   | 4   |
| Number of queues per port                 | • (16 Kbps)                         | • (16 Kbps)                                     |
| Bandwidth control (min. granularity)      | •                                   | •   |
| Video Surveillance Mode                   | •                                   | •   |
| ONVIF Device Discovery                    | •                                   | •   |
| Video Surveillance Topology               | •                                   | •   |
| Video Surveillance Device Information     | •                                   | •   |

\* The 250m long range mode is subject to cabling quality and/or IP camera's electrical design. Compatibility testing is recommended prior to use. UTP CAT5e rated cables (or higher) are required.



## ACCESSORIES FOR SWITCHES

### SFP/SFP+ Transceivers

#### Gigabit Ethernet SFP Transceivers



#### 10//25/40 Gigabit Ethernet SFP+/SFP28/QSFP+ Transceivers

| MODEL                         | DGS-712                 | DEM-310GT*              | DEM-311GT*                                       | DEM-410T               | DEM-431XT*   | DEM-432XT               | DEM-S2801SR                  |
|-------------------------------|-------------------------|-------------------------|--|------------------------|--|-------------------------|------------------------------|
| Standard                      | IEEE 802.3ab 1000BASE-T | IEEE 802.3z 1000BASE-LX | IEEE 802.3z 1000BASE-SX                          | IEEE 802.3an 10GBase-T | IEEE 802.3ae 10GBASE-SR  | IEEE 802.3ae 10GBASE-LR | IEEE 802.3by 25GBASE-SR      |
| Connector                     | RJ45                    | Duplex LC               | Duplex LC  | RJ45                   | Duplex LC  | Duplex LC               | Duplex LC                    |
| Cable Type (Maximum Distance) | Single-Mode             | 9/125 µm fibre (10 km)  |  |                        |  | 9/125 µm fibre (10 km)  |                              |
|                               | Multi-Mode              |                         | 50/125µm fibre (550m)<br>62.5/125µm fibre (220m) |                        | 50/125µm fibre (OM2 -82m, OM3-300m),<br>62.5/125µm fibre (OM1-33m) |                         | 50/125µm (OM3-70m, OM4-100m) |
|                               | Cat                     | Cat5, Cat5e, Cat6       |  | Cat5e, Cat6a (30 m)    |  |                         |                              |
| Wavelength                    |                         | 1310 nm                 | 850 nm   |                        | 850 nm   | 1310 nm                 | 850 nm                       |
| Power                         | 3.3 V                   | 3.3 V                   | 3.3 V  | 3.3 V                  | 3.3 V  | 3.3 V                   | 3.3 V                        |
| Hot-Pluggable                 | •                       | •                       | •  | •                      | •  | •                       | •                            |

\*Transceivers available in packs of 10 units, with a significant discount on the unit price. Please contact us or your authorized distributor.

DEM-310GT/10 DEM-431XT/10 DEM-311GT/10

### Industrial Accessories

### Media Converters

Industrial



|                  | MODEL       | ACCESSORIES  |
|------------------|-------------|--|
| POWER SUPPLIES   | DIS-H30-24  | 30W 24VDC Ultra Slim DIN Rail PSU<br>• Input: 85 ~ 264VAC<br>• Output: 21.6 ~ 29V DC<br>• Din rail TS-35/7.5 or 15 mountable<br>• -30~70°C operating temperature |
|                  | DIS-H60-24  | 60W 24VDC Ultra Slim DIN Rail PSU<br>• Input: 85 ~ 264VAC<br>• Output: 21.6 ~ 29V DC<br>• Din rail TS-35/7.5 or 15 mountable<br>• -30~70°C operating temperature |
|                  | DIS-N240-48 | 240W 48VDC DIN Rail PSU<br>• Input: 90 ~ 264VAC<br>• Output: 48 ~ 55V DC<br>• Din rail TS-35/7.5 or 15 mountable<br>• -20~70°C operating temperature             |
|                  | DIS-N480-48 | 480W 48VDC DIN Rail PSU<br>• Input: 90 ~ 264VAC<br>• Output: 48 ~ 55V DC<br>• Din rail TS-35/7.5 or 15 mountable<br>• -20~70°C operating temperature             |
| SFP TRANSCEIVERS | DIS-S301SX  | 1-port Mini-GBIC SFP to 1000BaseSX Multi-Mode Fibre Transceiver<br>• up to 550 m<br>• -40~85°C operating temperature   |
|                  | DIS-S302SX  | 1-port Mini-GBIC SFP to 1000BaseSX Multi-Mode Fibre Transceiver<br>• up to 2 km<br>• -40~85°C operating temperature  |
|                  | DIS-S310LX  | 1-port Mini-GBIC SFP to 1000BaseLX Single-Mode Fibre Transceiver<br>• up to 10 km<br>• -40~85°C operating temperature  |

| MEDIA CONVERTERS      | DMC-F025C/E                 | DMC-F155C/E                 | DMC-G025C/E                   | DMC-G105C/E                   |
|-----------------------|-----------------------------|-----------------------------|-------------------------------|-------------------------------|
| Standards             | 10/100Base-TX<br>100Base-FX | 10/100Base-TX<br>100Base-FX | 100/1000Base-T<br>1000Base-SX | 100/1000Base-T<br>1000Base-LX |
| Connectors            | SC / RJ45                   | SC / RJ45                   | SC / RJ45                     | SC / RJ45                     |
| Data Rate             |                             |                             |                               |                               |
| Fibre Type            | Single-Mode                 | Single-Mode                 | Multi-Mode                    | Single-mode                   |
| Maximum Distance      | 2 km                        | 15 km                       | 550 m                         | 10 km                         |
| Operating Temperature |                             |                             |                               |                               |
| IP-Rating             |                             |                             |                               |                               |

### Redundant Power Supplies



| MODEL            | DPS-500A       | DPS-520        | DPS-700        | DPS-PWR740AC   |
|------------------|----------------|----------------|----------------|----------------|
| Output Power     | 140 W          | 180 W          | 589 W          | 740 W          |
| Input Power      | 90 to 264 V AC | 90 to 264 V AC | 90 to 264 V AC | 90 to 264 V AC |
| Dimensions       | 172x257x43mm   | 196x257x52mm   | 441x139x44mm   | 185x73.5x40mm  |
| Mounting Options | DPS-800        | DPS-800        | 19in Rack, 1U  | N/A            |

### Switch Cables



| MODEL                     | DEM-CB100S/300S   | DEM-CB100Q28                                | DEM-CB100S28 |
|---------------------------|---|---|--------------|
| Cable Series Type         | SFP+ Direct Attach                                      | QSFP28 Direct Attach                        |              |
| Standard                  | SFP MSA   | SFP MSA                                     |              |
| Device Rate               | 10 Gbps   | 100 Gbps                                    |              |
| Connector Type            | SFP+ Cable Assembly                                     | QSFP28 to QSFP28 Cable Assembly             |              |
| Wire AWG                  | 30  | 30  |              |
| Minimum Cable Bend Radius | 23.5 mm   | 34.5 mm                                     |              |
| Cable Length              | 100/300 cm  | 100 cm                                      |              |
| Voltage                   | 30 V AC   | 30 V AC                                     |              |
| Current                   | 0.5 A   | 0.5 A                                       |              |
| Operating Temperature     | -40°C to 85°C   | -40°C to 75°C                               |              |
| Connectivity              | Recommended for use only with D-Link Switching Products | Physical Stacking Cable for DXS-3610 Series |              |

INDUSTRIAL SOLUTION



### Industrial M2M Switches



D-Link's industrial solutions are designed to withstand a wide range of temperatures, vibrations, and shocks, making them suitable for harsh environments. Additionally, the switches feature network management capabilities to ensure maximum redundancy with various ring architectures, such as Rapid-Recovery Ring and ERPS. These switches are essential for robot control, factory automation, as well as for the growing demand in Industry 4.0 and Smart Cities applications.

With all industry certifications

**1 Versatile Installation**

*They can be deployed on walls or DIN rails and inside junction boxes, outdoor cabinets, etc. They can withstand temperatures above 75°.*

**2 High Availability and Security**

*Extended network redundancy features with ring architectures and ERPS. IEC 62443-4-1 Certification: Product Security Development Life-Cycle Requirements, a security requirement in most projects.*



| DIS-100G Series<br>Industrial Fast Ethernet / Gigabit Unmanaged Switches for edge deployment | DIS-200G Series<br>Industrial Gigabit Smart Managed Switches for aggregation deployment | DIS-300G<br>Industrial Gigabit Managed Switches for aggregation/core deployment |
|--|---|---|
| Plug and play; compact size  | Cost-effective; compact size  | High performance; compact size  |
| -40 to 75° operating temperature   | -40 to 65° operating temperature  | -40 to 75° operating temperature  |
| DIN-Rail mounting  | DIN-Rail mounting   | DIN-Rail  |
| 5-port   | 12-port   | 8/12/14-port  |
| Redundant power inputs   | Optional PoE 802.3af/at support   | Optional PoE 802.3af/at support   |
| Optional PoE 802.3af/at support (DIS-100G-5PSW)  | VLAN support for added security   | VLAN support for added security   |

Industrial-grade accessories are also available: power supplies, SFP transceivers, and media converters. See the tables on page 17.

# Industrial Switches 10/100 and Gigabit



|                     |   | Smart Managed                                    |  |  | Managed                   |                           |  |                                 |  |
|---------------------|---|--|--|--|---------------------------|---------------------------|--|---------------------------------|--|
|                     | MODEL                                       | DIS-100G-5SW                                     | DIS-100G-5PSW                              | DIS-100G-6S/10S                                  | DIS-200G-12S              | DIS-200G-12PS             | DIS-300G-12SW                                    | DIS-300G-8PSW                   | DIS-300G-14PSW                                 |
| HARDWARE            | Number of Fast Ethernet ports               |  |  |  |                           |                           |  |                                 |  |
|                     | Number of Gigabit ports                     | 4  | 4  | 4 / 8  | 10                        | 10                        | 8  | 6                               | 10   |
|                     | Number of SFP ports                         | 1  | 1  | 2  | 2                         | 2                         | 4  | 2                               | 4  |
|                     | Number of 10G SFP+ ports                    |  |  |  |                           |                           |  |                                 |  |
|                     | PoE standards                               |  | 802.3af, 802.3at                           |  |                           | 802.3af, 802.3at          |  | 802.3af, 802.3at                | 802.3af, 802.3at                               |
|                     | PoE power budget                            |  | 120 W                                      |  |                           | 240 W                     |  | 120 W                           | 240 W  |
|                     | PoE capable ports                           |  | Ports 1-4, up to 30 W                      |  |                           | Ports 1-8, up to 30 W     |  | Ports 1-4, up to 30 W           | Ports 1-2, up to 60 W<br>Ports 3-8, up to 30 W |
|                     | Input voltage range                         | 12-58 VDC  | 12-58 VDC, 54-58V for PoE+, 48-58V for PoE | 12-48 VDC  | 12-48 VDC                 | 48-58 VDC                 | 12-58 VDC  | 48-58 VDC (54-58V VDC for PoE+) | 48-58 VDC (54-58V VDC for PoE+)                |
|                     | Compatible power supplies                   | DIS-H30-24, DIS-H60-24, DIS-N240-48, DIS-N480-48 | DIS-N240-48, DIS-N480-48                   | DIS-H30-24, DIS-H60-24, DIS-N240-48, DIS-N480-48 | DIS-H30-24, DIS-H60-24,   | DIS-N240-48, DIS-N480-48  | DIS-H30-24, DIS-H60-24, DIS-N240-48, DIS-N480-48 | DIS-N240-48, DIS-N480-48        | DIS-N240-48, DIS-N480-48                       |
|                     | Redundant power input option                | •  | •  | •  | •                         | •                         | •  | •                               | •  |
|                     | Mounting option                             | Din-rail and wall                                | Din-rail and wall                          | Din-rail and wall                                | Din-rail and wall         | Din-rail and wall         | Din-rail and wall                                | Din-rail and wall               | Din-rail and wall                              |
|                     | Operating temperature range                 | -40° to 75°C                                     | -40° to 75°C                               | -20° to 65°C                                     | -40° to 65°C              | -40° to 65°C              | -40 to +75°C                                     | -40 to +75°C                    | -40 to +75°C                                   |
|                     | Vibration, shock and freefall certification |  |  |  |                           |                           |  |                                 |  |
|                     | NEMA-TS2, EN50121-4 (compliant)             | •  | •  |  |                           |                           | •  | •                               | •  |
| EMC certification   |   |  |  |  |                           |                           |  |                                 |  |
| Ingress protection  | IP30  | IP30   | IP40                                       | IP30   | IP30                      | IP30                      | IP30   | IP30                            |  |
| L2                  | MAC address                                 | 2K   | 2K   | 4K   | 8K                        | 8K                        | 8K   | 8K                              | 8K   |
|                     | 802.1D STP, 802.1w RSTP, 802.1s MSTP        |  |  |  | •                         | •                         | •  | •                               | •  |
|                     | Fast Failover Protection Rings              |  |  |  | • (ERPS, 50-200ms)        | • (ERPS, 50-200ms)        | • (<20ms)  | • (<20ms)                       | • (<20ms)                                      |
|                     | 802.3ad, 802.1AX link aggregation           |  |  |  | •                         | •                         | •  | •                               | •  |
| VLAN                | VLAN group (max static)                     |  |  |  | 128                       | 128                       | 256  | 1024                            | 1024   |
|                     | Port / MAC / protocol-based VLAN, GVRP      |  |  |  | Port-based, GVRP          | Port-based, GVRP          | •  | •                               | •  |
|                     | Port-based double VLAN                      |  |  |  |                           |                           | •  | •                               | •  |
|                     | Auto-Servillance, Voice VLAN                |  |  |  | •                         | •                         |  |                                 |  |
| Multicast protocols |   |  |  | IGMP v1/v2, IGMP snooping                        | IGMP v1/v2, IGMP snooping | IGMP v1/v2, IGMP snooping | IGMP v1/v2, IGMP snooping                        | IGMP v1/v2, IGMP snooping       |  |
| QoS                 | 802.1p                                      | •  | •  | •  | •                         | •                         | •  | •                               | •  |
|                     | Policy-based access control engine          |  |  |  |                           |                           |  |                                 |  |
|                     | Number of queues per port                   | 4  | 4  | 8  | 4                         | 4                         | 8  | 8                               | 8  |
|                     | Traffic shaper                              |  |  |  | Port-based                | Port-based                | Port-based                                       | Port-based                      | Port-based                                     |
| Traffic policer     |   |  |  |  |                           |                           |  |                                 |  |
| SECURITY            | Multicast/Broadcast/Flooding Storm Control  |  |  |  | •                         | •                         | •  | •                               | •  |
|                     | Access control                              |  |  |  | Web-based                 | Web-based                 | IP/MAC/policy-based                              | IP/MAC/policy-based             | IP/MAC/policy-based                            |
| AAA                 | 802.1X access control                       |  |  |  |                           |                           | •  | •                               | •  |
|                     | RADIUS/TACACS+ authentication               |  |  |  | RADIUS only               | RADIUS only               | •  | •                               | •  |
| MANAGEMENT          | SNMP (v1/v2c/v3), RMON v1                   |  |  |  | SNMP only                 | SNMP only                 | •  | •                               | •  |
|                     | Web-based management                        |  |  |  | •                         | •                         | •  | •                               | •  |
|                     | Command line interface (CLI)                |  |  |  | •                         | •                         | •  | •                               | •  |
|                     | HTTPS, SSH                                  |  |  |  | •                         | •                         | •  | •                               | •  |
|                     | Syslog                                      |  |  |  | •                         | •                         | •  | •                               | •  |
|                     | Command Line Interface (CLI)                |  |  |  | Full                      | Full                      | Full   | Full                            | Full   |
| Console port        |   |  |  | RJ45   | RJ45                      | RJ45                      | RJ45   | RJ45                            |  |

# NUCLIAS CONNECT

## What is NUCLIAS Connect?

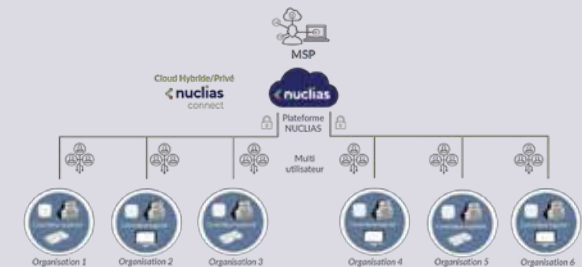
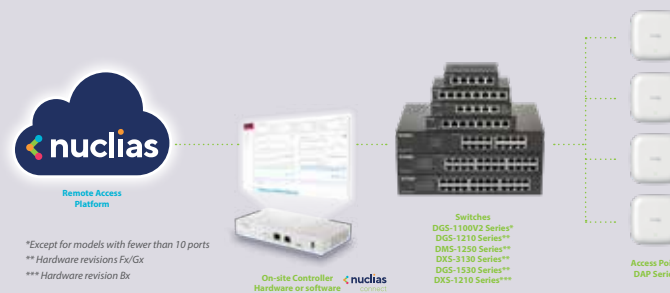
NUCLIAS Connect is the ultimate platform to manage and monitor your network infrastructure (switching and Wi-Fi) from anywhere, at any time. Everything is designed to make your daily operations easier.

With automated deployment capabilities, scheduled task planning, and alerts, you save time by eliminating repetitive maintenance and configuration tasks.

**With NUCLIAS Connect, you can:**

- Easily and quickly deploying your network equipment from a single point

- Managing, monitoring, and simplifying network maintenance
- Securing your company's network and evolving it
- Receiving alerts in case of malfunctions
- Complying with public Wi-Fi regulations



## How does NUCLIAS Connect work?

At the heart of your infrastructure is the Nuclias Connect controller. Whether software or hardware, the choice is yours!

**The controller serves various roles and objectives:**

1. Centralise and simplify the deployment and management of your network devices through profiles. Profile-based management saves you time by avoiding repetitive deployment tasks.
2. Monitor your network: deployment reports, network topology, Wi-Fi client statistics, switches, etc.

3. Alert you in case of offline devices, firmware updates, configuration changes, etc.
4. Ensure network event traceability (logs).

**It simplifies the installation of switches, Wi-Fi access points, and VPN routers, which:**

- Retrieve their configuration directly from the controller
- Report and send various information to the controller (statuses, statistics, etc.)

This provides you with a single interface to get an overview of your network infrastructure and various sites.

PROFESSIONAL WI-FI



| MODEL  | DAP-2682                                | DAP-2662                               | DAP-3666                               | DAP-X2810  | DAP-X2850  | DAP-X3060  | DAP-X3060OU  | DAP-E9560   |
|--|---|--|--|--|--|--|--|---|
| WiFi4EU/Hotspot 2.0 compatible                         |   | •                                      | •                                      |  |  |  |  |   |
| Wireless standards                                     | Simultaneous a/n/ac (Wave 2) and b/g/n  | Simultaneous a/n/ac (Wave 2) and b/g/n | Simultaneous a/n/ac (Wave 2) and b/g/n | Simultaneous a/n/ac/ax (Wi-Fi 6) and b/g/n/ax        | Simultaneous a/n/ac/ax (Wi-Fi 6) and b/g/n/ax        | Simultaneous a/n/ac/ax (Wi-Fi 6) and b/g/n/ax        | Simultaneous a/n/ac/ax (Wi-Fi 6) and b/g/n/ax        | Wi-Fi 7   |
| 802.11k/v/r fast roaming                               |   | •                                      | •                                      | • (802.11k/r only)                                   | • (802.11k/r only)                                   | • (802.11k/r only)                                   | • (802.11k/r only)                                   | • (802.11be)  |
| Wireless frequency range                               | 2.4 to 2.4835 GHz<br>5.15 to 5.85 GHz   | 2.4 to 2.4835 GHz<br>5.15 to 5.875 GHz | 2.4 to 2.4835 GHz<br>5.15 to 5.875 GHz | 2.4 to 2.483 GHz, 5.15 to 5.35 GHz, 5.47 to 5.85 GHz | 2.4 to 2.483 GHz, 5.15 to 5.35 GHz, 5.47 to 5.85 GHz | 2.4 to 2.483 GHz, 5.15 to 5.35 GHz, 5.47 to 5.85 GHz | 2.4 to 2.483 GHz, 5.15 to 5.35 GHz, 5.47 to 5.85 GHz | 2.4 to 2.483 GHz, 5.15 to 5.35 GHz, 5.47 to 5.85 GHz, 5.925 to 7.125 GHz                    |
| Maximum wireless speed                                 | 1700 Mbps - 5 GHz<br>600 Mbps - 2.4 GHz | 867 Mbps - 5 GHz<br>300 Mbps - 2.4 GHz | 867 Mbps - 5 GHz<br>300 Mbps - 2.4 GHz | 1200 Mbps - 5 GHz<br>600 Mbps - 2.4 GHz              | 2402 Mbps - 5 GHz<br>1147 Mbps - 2.4 GHz             | 2401 Mbps - 5 GHz<br>574 Mbps - 2.4 GHz              | 2401 Mbps - 5 GHz<br>574 Mbps - 2.4 GHz              | 5764 Mbps - 6 GHz<br>2402 Mbps - 5 GHz<br>688 Mbps - 2.4 GHz                                |
| MIMO   | • (MU-MIMO)                             | • (MU-MIMO)                            | • (MU-MIMO)                            | • (MU-MIMO)  | • (MU-MIMO)  | • (MU-MIMO)  | • (MU-MIMO)  | • (MU-MIMO)   |
| Antenna type   | 4 x 4 embedded omni-directional         | 2 x 2 embedded omni-directional        | 2 x 2 embedded omni-directional        | 2 x 2 embedded omni-directional                      | 4 x 4 embedded omni-directional                      | 2 x 2 embedded omni-directional                      | 2 x 2 embedded omni-directional                      | 2 x 2.4 GHz internal antennas<br>2 x 5 GHz internal antennas<br>2 x 6 GHz internal antennas |
| Antenna gain   | 3.7 dBi for 2.4GHz<br>4.8 dBi for 5GHz  | 3 dBi for 2.4GHz<br>4 dBi for 5GHz     | 6 dBi for 2.4GHz<br>6 dBi for 5GHz     | 3.2 dBi for 2.4GHz<br>4.2 dBi for 5GHz               | 3.5 dBi for 2.4GHz<br>5.5 dBi for 5GHz               | 3 dBi for 2.4GHz<br>3 dBi for 5GHz                   | 3 dBi for 2.4GHz<br>3 dBi for 5GHz                   |   |
| Power-over-Ethernet (PoE)                              | • (802.3at)                             | • (802.3af)                            | • (802.3af)                            | • (802.3at)  | • (802.3at)  | • (802.3at)  | • (802.3at)  | • (802.3bt)   |
| DC power input   |   |  |  |  |  |  |  | 20V/2.25A   |
| Wired interface  | 2 x Gigabit                             | 1 x Gigabit                            | 2 x Gigabit                            | 1 x Gigabit  | 1 x 2.5 Gigabit<br>1 x Gigabit                       | 1 x 2.5 Gigabit                                      | 1 x 2.5 Gigabit                                      | 1 x 2.5 Gigabit   |
| Type of housing  | Plastic                                 | Plastic                                | Plastic                                | Plastic  | Plastic  | Plastic  | Plastic  | Plastic   |
| Outdoor housing (IP rating)                            |   |  | • (IP68)                               |  |  |  |  |   |
| Surge/ESD protection                                   |   |  |  |  |  |  |  |   |
| DIN rail mountable                                     |   |  |  |  |  |  |  |   |
| Maximum number of SSIDs                                | 16                                      | 16                                     | 16                                     | 16   | 16   | 16   | 16   | 16  |
| Multiple modes (AP, WDS with AP, WDS / bridge, client) | •                                       | •                                      | •                                      | •  | •  | •  | •  | •   |
| WMM-PS/802.11e (U-APSD)                                | •                                       | •                                      | •                                      | •  | •  | •  | •  | •   |
| Wi-Fi scheduler  | •                                       | •                                      | •                                      | •  | •  | •  | •  | •   |
| AP traffic load balance                                | •                                       | •                                      | •                                      | •  | •  | •  | •  | •   |

HARDWARE

WIRELESS

100% CLOUD MANAGEMENT



People simply want things to work as they should, and network management is no exception. D-Link designed Nuclias to be a networking solution with a simple and user-orientated design, packed with rich features and functionality, designed to address the needs of everyone.



100% CLOUD MANAGEMENT

Nuclias Cloud allows any organisation with any level of IT resource to quickly and easily set up, configure, monitor, troubleshoot, and manage their network deployment remotely through a web browser, or the dedicated Nuclias tablet app.

### Zero-Touch Deployment

Zero-touch deployment and reduced installation and configuration costs thanks to a centralised, profile-based cloud management system.

### Hassle-Free Management

Nuclias Cloud is a turnkey solution with simple installation and management, designed to work even if the connection to the cloud is interrupted.

### Unlimited Scalability

Suitable for small branch offices to large networks, Nuclias Cloud provides unlimited capacity and uncompromised throughput with its low in-band data management footprint.

### Main features

- Zero-touch provisioning
- Role-based administration
- Auditable change logs
- Authentication via customisable captive portal, 802.1x and RADIUS server
- Social login for Wi-Fi access supported
- Advanced traffic report and data analysis
- Intuitive web-based interface with multilingual support
- Automatic monitoring and alerts
- Over-the-web firmware upgrades
- Searchable network-wide event log
- Intuitive VLAN Configuration
- Cloud based RF Optimisation

100% CLOUD MANAGEMENT



## The 100% Cloud network management solution for switches, Wi-Fi, and SD-WAN VPN gateway.

Wi-Fi access points and Smart Switches are deployed without the need for an on-site technician, simply by connecting to the network and provisioning them in the Cloud account, allowing installation and configuration to be launched remotely. The 100% Cloud centralised management streamlines the installation and management of any network environment.

With Nuclias Cloud, network configurations and software updates are sent to remote devices via the Cloud, without requiring on-site equipment or specialised personnel. Additionally, the SD-WAN VPN gateway DBG-2000 adds a layer of security with the most advanced VPN, dynamic web/application filtering, and high-performance WAN load balancing.



### Gigabit Cloud-Managed Switches

|                   |                                      | Gigabit Ethernet     |             |                       |                       |             |                       |
|-------------------|--------------------------------------|----------------------|-------------|-----------------------|-----------------------|-------------|-----------------------|
|                   |                                      | DBS-2000-10MP        | DBS-2000-28 | DBS-2000-28P          | DBS-2000-28MP         | DBS-2000-52 | DBS-2000-52MP         |
| HARDWARE          | MODEL                                | DBS-2000-10MP        | DBS-2000-28 | DBS-2000-28P          | DBS-2000-28MP         | DBS-2000-52 | DBS-2000-52MP         |
|                   | Number of Gigabit ports              | 8                    | 24          | 24                    | 24                    | 48          | 48                    |
|                   | Number of Combo 1000BASE-T/SFP ports |                      | 4           | 4                     | 4                     | 4           | 4                     |
|                   | Number of SFP ports                  | 2                    |             |                       |                       |             |                       |
|                   | Switching capacity                   | 20 Gbps              | 56 Gbps     | 56 Gbps               | 56 Gbps               | 104 Gbps    | 104 Gbps              |
|                   | PoE standards                        | 802.3af, 802.3at     |             | 802.3af, 802.3at      | 802.3af, 802.3at      |             | 802.3af, 802.3at      |
|                   | PoE power budget                     | 130 W                |             | 193 W                 | 370 W                 |             | 370 W                 |
|                   | PoE capable ports                    | Ports 1-8, up to 30W |             | Ports 1-24, up to 30W | Ports 1-24, up to 30W |             | Ports 1-48, up to 30W |
|                   | Time-based PoE                       | •                    |             | •                     | •                     |             | •                     |
|                   | Fanless                              | •                    | •           | •                     | •                     | •           | •                     |
| 802.3az EEE       | •                                    | •                    | •           | •                     | •                     | •           |                       |
| Power supply type | Internal                             | Internal             | Internal    | Internal              | Internal              | Internal    |                       |
| L2                | MAC address                          | 8K                   | 8K          | 8K                    | 8K                    | 16K         | 16K                   |
|                   | 802.1D STP, 802.1w RSTP              | •                    | •           | •                     | •                     | •           | •                     |
|                   | 802.3ad link aggregation             | •                    | •           | •                     | •                     | •           | •                     |
| VLAN              | VLAN group (max static)              | 256                  | 256         | 256                   | 256                   | 256         | 256                   |
|                   | Port-based VLAN, Voice VLAN          | •                    | •           | •                     | •                     | •           | •                     |
| SECURITY          | SSL                                  | •                    | •           | •                     | •                     | •           | •                     |
|                   | ACL                                  | •                    | •           | •                     | •                     | •           | •                     |
|                   | Port security                        | •                    | •           | •                     | •                     | •           | •                     |

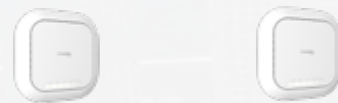
### Nuclias Cloud Wi-Fi 6 Access Points



### SD-WAN Gateway Firewall/VPN\*



### Nuclias Cloud Access Points



| MODEL                  | DBA-X1230P                                    | DBA-X2830P                               |
|------------------------|---|--|
| Indoor/Outdoor         | Indoor  | Indoor                                   |
| Wireless standards     | Simultaneous Dual-band a/n/ac/ax and b/g/n/ax |  |
| Antenna                | 2 x 2 embedded                                | 4 x 4 embedded                           |
| Maximum wireless speed | 1200 Mbps - 5 GHz<br>600 Mbps - 2.4 GHz       | 2402 Mbps - 5 GHz<br>1147 Mbps - 2.4 GHz |
| MU-MIMO                | •   | •  |
| Power-over-Ethernet    | • (802.3at)                                   | • (802.3at)                              |
| Wired interface        | 1 x Gigabit Ethernet                          | 1 x 2.5G Ethernet, 1 x Gigabit Ethernet  |
| Type of Housing        | Plastic                                       | Plastic                                  |
| WPA3 Wi-Fi Encryption  | •   | •  |

| MODEL   | DBG-2000 |
|---|----------|
| Number of Gigabit ports                           | 4        |
| Configurable WAN (load balancing)/LAN/DMZ ports   | 4        |
| Console port                                      | •        |
| Firewall throughput                               | 1.8 Gbps |
| 3DES/AES  | 450 Mbps |
| SSL VPN   | 200 Mbps |
| Maximum concurrent sessions                       | 200,000  |
| Maximum IPsec VPN, PPTP/L2TP, SSL, GRE VPN tunnel | 200      |
| Intrusion prevention system                       | •        |
| Dynamic web content filtering                     | •        |

| MODEL                  | DBA-2520P  | DBA-2820P                                |
|------------------------|--|--|
| Indoor/Outdoor         | Indoor   | Indoor                                   |
| Surge/ESD Protection   |  |  |
| Wireless standards     | Simultaneous Dual-band a/n/ac (Wave 2) and b/g/n |  |
| Antenna                | 3 x 3 embedded                                   | 4 x 4 embedded                           |
| Maximum wireless speed | 1,300 Mbps - 5 GHz<br>600 Mbps - 2.4 GHz         | 1,733 Mbps - 5 GHz<br>800 Mbps - 2.4 GHz |
| MU-MIMO                | •  | •  |
| Power-over-Ethernet    | • (802.3at)                                      | • (802.3at)                              |
| Wired interface        | 2 x Gigabit Ethernet                             | 2 x Gigabit Ethernet                     |
| Type of Housing        | Plastic  | Plastic                                  |
| WPA3 Wi-Fi Encryption  | •  | •  |

\* DBG-2000 can be integrated into any type of network, not necessarily Nuclias Cloud.

NETWORK MANAGEMENT



# Choosing Network Management

Our network management options allow you to centrally manage both Switching and Wireless networks, whether within a local network or remotely.

Whether it's solutions based on free software like Nuclias Connect, 100% cloud-based platforms like Nuclias Cloud, or traditional Wireless controllers, they provide network administrators with full access and an intuitive interface to manage any network topology, from the simplest installations to the most complex deployments.

|                   |                               | Nuclias Connect Hardware Controller                                   |   | Nuclias Hyper Hardware Controller                                     | Nuclias Connect Hardware Controller                                   | Nuclias Connect Software Controller                                   |
|-------------------|-------------------------------|---|---|---|---|---|
|                   |                               | DNH-1000  | DNH-3000  | DNH-5000  | DNH-100   | DNC-100   |
| HARDWARE DESIGN   | Model                         | DNH-1000  | DNH-3000  | DNH-5000  | DNH-100   | DNC-100   |
|                   | Network Interface             | 2.5G Ethernet Port x 1  | 10G SFP Slot x 2<br>1G Ethernet Port x 4                              | 2.5G Ethernet Port x 2  | 1G Ethernet Port x 1  | -   |
|                   | Other Interface               | -   | -   | USB 3.0 x 1<br>USB 2.0 x 2<br>HDMI x 2                                | Micro SD x 1<br>USB 3.0 x 1   | -   |
| DEVICE MANAGEMENT | Storage Interface             | USB 3.0 x 1   | USB 3.0 x 1   | USB 3.0 x 1   | -   | -   |
|                   | Management Scale              | 500 devices   | 1500 devices  | 2000 devices*   | 100 devices   | 1500 devices  |
|                   | Network Type                  | Medium/Large Network  | Large Network   | Large Network   | Medium Network  | Large Network   |
| SYSTEM MANAGEMENT | Managed Device                | EAPs<br>Selected Aggregation and Edge Switches                        | EAPs<br>Selected Aggregation and Edge Switches                        | EAPs<br>Core, Aggregation and Edge Switches                           | EAPs<br>Aggregation and Edge Switches                                 | EAPs<br>Aggregation and Edge Switches                                 |
|                   | Setup Wizard                  | Yes   | Yes   | Yes   | Yes   | Yes   |
|                   | Role based Administration     | Yes   | Yes   | Yes   | Yes   | Yes   |
|                   | Multi-Site Management         | Yes   | Yes   | Yes   | Yes   | Yes   |
|                   | Device Layer 2/3 Discovery    | Layer 2/Layer 3   | Layer 2/Layer 3   | Layer 2/Layer 3   | Layer 2/Layer 3   | Layer 2/Layer 3   |
|                   | Custom/Topology/Device View   | Yes   | Yes   | Yes   | Yes   | Yes   |
|                   | Event Alarm and Notification  | Yes   | Yes   | Yes   | Yes   | Yes   |
|                   | Network Summary Report        | Yes   | Yes   | Yes   | Yes   | Yes   |
|                   | Batch Configuration           | Yes   | Yes   | Yes   | Yes   | Yes   |
|                   | Batch Firmware Upgrading      | Yes   | Yes   | Yes   | Yes   | Yes   |
|                   | Online Firmware Upgrade       | Yes   | Yes   | Yes   | Yes   | Yes   |
|                   | Single Sign On                | Yes   | Yes   | No  | Yes   | Yes   |
| REST API Support  | Yes                           | Yes   | Yes   | Yes   | Yes   |   |
| Multilingual      | Yes                           | Yes   | Yes   | Yes   | Yes   |   |
| WIRELESS FUNCTION | Captive Portal Authentication | Local DB, Remote Radius, LDAP, External Captive Portal, POP3, Voucher | Local DB, Remote Radius, LDAP, External Captive Portal, POP3, Voucher | Local DB, Remote Radius, LDAP, External Captive Portal, POP3, Voucher | Local DB, Remote Radius, LDAP, External Captive Portal, POP3, Voucher | Local DB, Remote Radius, LDAP, External Captive Portal, POP3, Voucher |
|                   | IP/MAC Filter                 | Yes   | Yes   | Yes   | Yes   | Yes   |
|                   | Auto RF Management            | Yes   | Yes   | Yes   | Yes   | Yes   |
|                   | Bandwidth Optimization        | Yes   | Yes   | Yes   | Yes   | Yes   |
|                   | Wireless Schedule             | Yes   | Yes   | Yes   | Yes   | Yes   |
|                   | AP reboot Schedule            | Yes   | Yes   | Yes   | Yes   | Yes   |
|                   | Neighbor AP Detection         | Yes   | Yes   | Yes   | Yes   | Yes   |
|                   | Payment Gateway (Paypal)      | Yes   | Yes   | Yes   | Yes   | Yes   |

\*Nuclias Connect device: Up to 1800 ; SNMP managed Device: Up to 200



UNIFIED WI-FI

5 KM RADIO LINKS

20 KM RADIO LINK



| HARDWARE   |  | DAP-3711                     | DAP-3712                     | DWL-6610AP                                   | DWL-6620APS                                      | DWL-8620AP                                       | DWL-X8630AP                                |
|--|--|------------------------------|------------------------------|--|--|--|--|
| MODEL  |  | DAP-3711                     | DAP-3712                     | DWL-6610AP                                   | DWL-6620APS                                      | DWL-8620AP                                       | DWL-X8630AP                                |
| Wireless standards   |  | a/n/ac                       | a/n/ac                       | Simultaneous Dual-Band a/n/ac and b/g/n      | Simultaneous Dual-Band a/n/ac (Wave 2) and b/g/n | Simultaneous Dual-Band a/n/ac (Wave 2) and b/g/n | Simultaneous Dual-Band a/n/ac/ax and b/g/n |
| Wireless frequency range   |  | 5180~5320 MHz, 5745~5825 MHz | 5180~5320 MHz, 5745~5825 MHz | 2.4 to 2.4835GHz 5.15 to 5.875GHz            | 2.4 to 2.4835GHz 5.15 to 5.875GHz                | 2.4 to 2.4835GHz 5.15 to 5.875GHz                | 2.4 to 2.4835GHz 5.15 to 5.85 GHz          |
| Maximum wireless speed   |  | 867 Mbps - 5 GHz             | 867 Mbps - 5 GHz             | 867 Mbps - 5 GHz 300 Mbps - 2.4 GHz          | 867 Mbps - 5 GHz 400 Mbps - 2.4 GHz              | 1733 Mbps - 5 GHz 800 Mbps - 2.4 GHz             | 2402 Mbps - 5 GHz 1147 Mbps - 2.4 GHz      |
| MIMO   |  | •                            | •                            | •  | • (MU-MIMO)                                      | • (MU-MIMO)                                      | • (MU-MIMO)                                |
| Antenna type   |  | 2 x 2 embedded sector        | 2 x 2 dish sector            | 2 x 2 embedded / detachable omni-directional | 2 x 2 embedded omni-directional                  | 4 x 4 embedded / detachable omni-directional     | 4 x 4 embedded omni-directional            |
| Smart Antennas   |  |                              |                              |  | •  |  |  |
| Antenna gain   |  | 15 dBi                       | 23 dBi                       | 4 / 3 dBi for 2.4GHz 4 dBi for 5GHz          | 4 dBi for 2.4GHz 6 dBi for 5GHz                  | 3 dBi for 2.4GHz 4 dBi for 5GHz                  | 3 dBi for 2.4GHz 4 dBi for 5GHz            |
| Power-over-Ethernet  |  | • (proprietary)              | • (802.3at)                  | • (802.3af)                                  | • (802.3at)                                      | • (802.3at)                                      | • (802.3at)                                |
| Wired interface  |  | 2 x Gigabit Ethernet         | 1 x Gigabit Ethernet         | 1 x Gigabit Ethernet                         | 2 x Gigabit Ethernet                             | 2 x Gigabit Ethernet                             | 1 x Gigabit Ethernet 1 x 2.5G Ethernet     |
| Link Aggregation   |  |                              |                              |  | LAG  | LACP   | LACP                                       |
| Console port   |  |                              |                              | •  | •  | •  | •  |
| Type of housing  |  | Plastic                      | Plastic                      | Plastic                                      | Plastic  | Plastic  | Plastic                                    |
| Outdoor housing (IP rating)                                      |  | • (IP66)                     | • (IP66)                     |  |  |  |  |
| Plenum rated (UL-2043)   |  |                              |                              | •  | •  | • (DWL-8620AP only)                              | •  |
| WIRELESS MODES   |  |                              |                              |  |  |  |  |
| Access point (AP)  |  | •                            | •                            | •  | •  | •  | •  |
| WDS with AP  |  | •                            | •                            | •  | •  | •  | •  |
| WDS / bridge   |  | •                            | •                            | •  | •  | •  | •  |
| WIRELESS FEATURES  |  |                              |                              |  |  |  |  |
| Maximum number of SSIDs  |  | 8                            | 8                            | 32 (16 per radio)                            | 32 (16 per radio)                                | 32 (16 per radio)                                | 32 (16 per radio)                          |
| Auto channel selection   |  | •                            | •                            | •  | •  | •  | •  |
| WMM-PS/802.11e (U-APSD), AP load balance                         |  | •                            | •                            | •  | •  | •  | •  |
| Wi-Fi scheduler  |  | •                            | •                            | •  | •  | •  | •  |
| L2 roaming   |  |                              |                              | •  | •  | •  | •  |
| SECURITY   |  |                              |                              |  |  |  |  |
| WPA3 - 128/192-bit Personal/Enterprise wireless encryption       |  |                              |                              |  | •  | •  | •  |
| WEP 64/128bit, WPA/WPA2-Personal/Enterprise, TKIP/AES encryption |  | • (no WEP encryption)        | • (no WEP encryption)        | •  | • (no WEP encryption)                            | • (no WEP encryption)                            | • (no WEP encryption)                      |
| WPA/WPA2-PSK over WDS  |  |                              |                              | •  | •  | •  | •  |
| WLAN partition   |  | •                            | •                            | •  | •  | •  | •  |
| SSID broadcast disable   |  | •                            | •                            | •  | •  | •  | •  |
| Rogue AP detection, station isolation                            |  | • (no Rogue AP dect.)        | • (no Rogue AP dect.)        | •  | •  | •  | •  |
| MAC address filtering, 802.1X authentication                     |  | •                            | •                            | •  | •  | •  | •  |
| WIRELESS CONTROLLER MANAGED FEATURES                             |  |                              |                              |  |  |  |  |
| Rogue AP mitigation  |  |                              |                              | •  | •  | •  | •  |
| L2/L3 fast roaming   |  |                              |                              | •  | •  | •  | •  |
| WIDS/WIPS  |  |                              |                              | •  | •  | •  | •  |
| Auto-channel, auto-RF management                                 |  |                              |                              | •  | •  | •  | •  |
| AP load balance  |  |                              |                              | •  | •  | •  | •  |
| Captive portal   |  |                              |                              | •  | •  | •  | •  |
| View neighbour AP information                                    |  |                              |                              | •  | •  | •  | •  |
| Supported D-Link Wireless Controller                             |  |                              |                              | DWC-1000, DWC-2000                           | DWC-1000, DWC-2000                               | DWC-1000, DWC-2000                               | DWC-1000, DWC-2000                         |
| MANAGEMENT   |  |                              |                              |  |  |  |  |
| WEB  |  | •                            | •                            | •  | •  | •  | •  |
| SNMP (v1, V2c, v3)   |  |                              |                              | •  | •  | •  | •  |
| CLI, Telnet, SSH   |  |                              |                              | •  | •  | •  | •  |
| Syslog   |  | •                            | •                            | •  | •  | •  | •  |

| DWC-2000   |   |
|--|---|
| Number of Gigabit ports                                      | 4 x Combo LAN   |
| Type of controller   | Hardware-based  |
| Standard number of APs                                       | 64 (256 with cluster of 4 x DWC-2000)   |
| Maximum number of APs through optional license upgrade       | 256 (1024 with cluster of 4 x DWC-2000)   |
| Supported AP   | Puntos de acceso profesionales de la gama DWL   |
| Supported switches   |   |
| Supported SDN Gateway / VPN Firewall                         |   |
| Zero touch provisioning for AP deployment                    |   |
| AP geolocation   |   |
| Controller redundancy  | •   |
| Advanced traffic report and data analysis                    |   |
| Visualised topology  | •   |
| NAT pass through (AP)  |   |
| Multi-tenancy  |   |
| WIDS   | •   |
| IPv6   | •   |
| Captive portal   | •   |
| Authentication method  | 802.1x, RADIUS, Local DB, LDAP, POP3, Wi-Fi passcode, AD Local DB, external RADIUS, NAP |
| Payment gateway (Paypal, WorldPay, SecureNet, Authorise.Net) | •   |
| Web redirect   | •   |
| RF   |   |
| Auto transmit power control                                  | •   |
| Self-healing around failed APs                               | •   |
| WIRELESS FEATURE   |   |
| Multiple SSID per Radio (AP)                                 | 16  |
| Band steering  | •   |
| Seamless roaming   | •   |
| L2 roaming   | •   |
| Bandwidth optimisation                                       | • (QoS)   |
| Load balancing   | •   |
| MANAGEMENT   |   |
| Web-based user interface                                     | HTTPS   |
| Firmware/module online check                                 |   |
| Remote management  | •   |
| Cloud hosting  |   |
| Firmware/configuration upgrade by scheduling                 |   |
| NETWORKING   |   |
| WAN fail-over  |   |
| Link aggregation   | • (LACP)  |
| Layer 3 routing (table size)                                 | • (2048)  |
| Firewall   |   |
| VLAN   | •   |
| Support VPN gateway  |   |
| Build in DHCP server   | •   |
| OTHERS   |   |
| Optional license upgrades                                    | DWC-2000-AP32-LIC<br>DWC-2000-AP64-LIC<br>DWC-2000-AP128-LIC                            |



# The smart way to protect and control your home

Keep an eye on your home while you're away, save money by controlling your power budget, set your lights to turn on when it gets dark. **Your home, only smarter.**

- 1 Smart scheduling and automation
- 2 Cloud recording allows you to record video clips to off-site cloud storage
- 3 One-tap feature allows you to easily control multiple devices and bundle multiple actions into scenarios
- 4 Works with Amazon Alexa and Google Assistant voice control
- 5 Quick and easy setup with integrated Bluetooth



## Protect Your Home with Smart AI-Based Detection

  
**Person Detection**  
 Identifies human motion

  
**Vehicle Detection**  
 Detects vehicles

  
**CO/Smoke Alarm Sound Detection**  
 Alerts you through app

  
**Glass Break Detection**  
 Detects the sound of breaking glass



The next-generation mydlink Wi-Fi cameras integrate people detection. On certain models, this is enhanced with AI, advanced image analysis for detecting priority areas, crossings, etc.



The **mydlink app** allows for simultaneous viewing of multiple cameras, and access to live streaming is instantaneous. It integrates geolocation to activate privacy mode when approaching the house and deactivate it when leaving. Detection of motion, sound, or a person triggers a notification with a photo on mobile phones and smartwatches, and initiates recording in the Cloud.



|                      | MODEL                       | DCS-6100LHV2          | DCS-6501LH   | DCS-8350LH   | DCS-8526LH   | DCS-8620LH  |
|----------------------|-----------------------------|-----------------------|--|--|--|---|
| HARDWARE             | Indoor/Outdoor              | Indoor                | Indoor   | Indoor   | Indoor   | Outdoor (IP65)  |
|                      | Maximum Video Resolution    | 1080p (1920 x 1080)   | 1296p (2304 x 1296)                                    | 1440p (2560 x 1440)                                  | 1440p (2560 x 1440)  | 1440p (2560 x 1440)   |
|                      | Night Vision (Range)        | ● (Up to 5 m)         | ● (Up to 8 m)  | ● (Up to 7 m)  | ● (Up to 7 m)  | ● (Up to 7 m)   |
|                      | Field Of View (H/V/D)       | 99° / 57° / 120°      | 89° / 48° / 107°                                       | 108° / 58° / 127°                                    | 102.5° / 55.2° / 122°  | 108° / 58° / 127°   |
|                      | Colour Night Vision         |                       |  |  | ●  | ●   |
|                      | Motorised Pan/Tilt          |                       | ● (pan and tilt)                                       |  | ● (pan and tilt)   |   |
|                      | Pan Range                   |                       | -175° to +180°   |  | -170° to +170°   |   |
|                      | Tilt Range                  |                       | -90° to +90°   |  | -10° to +90°   |   |
|                      | Preset positions            |                       | ●  |  | ●  |   |
|                      | Auto Motion Tracking        |                       | ●  |  | ●  |   |
|                      | Panorama Position Selection |                       | ●  |  | ●  |   |
|                      | 2-Way Audio                 | ●                     | ●  | ●  | ●  | ●   |
|                      | Built-in Microphone         | ●                     | ●  | ●  | ●  | ●   |
|                      | Built-in Speaker            | ●                     | ●  | ●  | ●  | ●   |
|                      | Built-in Siren              |                       |  |  |  | ●   |
|                      | Wireless                    | 802.11g/n             | 802.11b/g/n/ax   | Dual-band 802.11n/ac                                 | Dual-band 802.11n/ac   | Dual-band 802.11n/ac  |
|                      | Ethernet Port               |                       |  |  | ●  |   |
| Maximum microSD card | 256 GB                      | 128 GB                | 256 GB   | 256 GB   | 256 GB   |   |
| FEATURES             | Sound / Motion Detection    | ●                     | ●  | ●  | ●  | ●   |
|                      | Glass Break Detection       |                       |  |  |  | ●   |
|                      | Extra Motion Features       |                       | Auto Motion Tracking / Continuous Recording to microSD | AI-Based Person Detection / CO/Smoke Alarm Detection | Auto Motion Tracking / Person Detection / CO/Smoke Alarm Detection / Continuous Recording to microSD | AI-Based Person Detection / Vehicle Detection / Glass Break Sound Detection / Continuous Recording to microSD |
|                      | Video Recording             | Cloud / microSD / App | Cloud / microSD / App                                  | Cloud / microSD / App                                | Cloud / microSD / App  | Cloud / microSD / App   |
|                      | Amazon Alexa Support        | ●                     | ●  | ●  | ●  | ●   |
|                      | Google Assistant Support    | ●                     | ●  | ●  | ●  | ●   |
|                      | Bluetooth Setup             |                       | ●  | ●  | ●  | ●   |
| ONVIF Support        |                             |                       | ●  | ●  | ●  |   |



AQUILA PRO AI

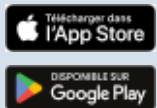


# AQUILA PRO AI



## Design and technology go hand in hand

AQUILA PRO AI features an advanced design to seamlessly blend into environments where modern aesthetics are essential. From a technological standpoint, it incorporates the latest Wi-Fi 6 technology with 160 MHz channels, as well as AI-powered optimisation for Mesh networking and traffic prioritisation.



### AQUILA PRO AI App

Easy installation from your mobile phone. Advanced network management with AI, smart prioritisation, and more. Parental control to restrict access based on time and content.

| MODEL    |  | M30 / M30-2   | M60 / M60-2   |
|----------|--|---|---|
| GENERAL  | Coverage area  | Up to 260 m <sup>2</sup> / Up to 465 m <sup>2</sup> | Up to 280 m <sup>2</sup> / Up to 510 m <sup>2</sup> |
|          | Number of units in pack                                    | 1 / 2   | 1   |
|          | D-Link Wi-Fi Mesh  | ●   | ●   |
| WIRELESS | Wireless standard  | Wi-Fi 6 AX3000                                      | Wi-Fi 6 AX6000                                      |
|          | Wireless speed   | 574 Mbps 2.4 GHz<br>2402 Mbps 5 GHz                 | 574 Mbps 2.4 GHz<br>2402 Mbps 5 GHz                 |
|          | Dual-band  | ●   | ●   |
|          | Smart Steering (automatic selection of optimal Wi-Fi band) | ●   | ●   |
|          | Smart Roaming  | ●   | ●   |
|          | Multi-User MIMO (MU-MIMO)                                  | ●   | ●   |
|          | Wireless Security  | WPA2/WPA3   | WPA2/WPA3   |
| BACKHAUL | Dedicated Backhaul   | ● (Ethernet)  | ● (Ethernet)  |
|          | Backhaul technology  | Gigabit Ethernet                                    | Gigabit Ethernet                                    |
| WIRED    | LAN speed  | Gigabit Ethernet                                    | Gigabit Ethernet                                    |
|          | Number of WAN ports / unit                                 | 1   | 1   |
|          | Number of LAN ports / unit                                 | 4   | 4   |



### Smart Coverage

Mesh network with AI for real-time analysis of available channels and connected devices.



### Maximum Speed

Wi-Fi 6 speeds of up to 6,000 Mb/s, plus four LAN ports for maximum wired connectivity.



### Compatibility

They can be used as routers, repeaters, or access points alongside any operator's modem.

4G/5G



# 4G/5G Mobile Internet

Our 4G/5G solutions are perfect for deploying networks in areas where broadband is unavailable or for accessing the internet without relying on mobile phone tethering, which quickly drains battery life and offers limited performance compared to a dedicated router. Mobile hotspots feature high-performance batteries and a compact design for easy portability. They support SIM cards from all operators and are Plug & Play. For business environments, high-speed networks can be deployed using 5G with the D-Link DWP-1010 outdoor router.

## 4G/5G Portable Hotspots



| Model                    | DWR-932   | DWR-933   | F518                                |
|--------------------------|---|---|-------------------------------------|
| Wireless standard        | Wireless N300                                     | Wireless AC1200                                   | Wireless AX1800                     |
| Wireless speed           | 300 Mbps 2.4 GHz                                  | 300 Mbps 2.4 GHz<br>867 Mbps 5 GHz                | 574 Mbps 2.4 GHz<br>1201 Mbps 5 GHz |
| Dual-band                |   | •   | •                                   |
| MU-MIMO                  |   |   | •                                   |
| Wi-Fi Antennas           | Internal  | Internal  | Internal                            |
| 4G/5G Antennas           | Internal  | Internal  | Internal                            |
| Type of WAN              | 4G LTE Cat. 4<br>(D/L: 150 Mbps,<br>U/L: 50 Mbps) | 4G LTE Cat. 6<br>(D/L: 300 Mbps,<br>U/L: 50 Mbps) | 5G NR/LTE                           |
| Integrated SIM card slot | •   | •   | •                                   |
| USB port                 | micro-USB x 1                                     | micro-USB x 1                                     | USB type C x 1                      |
| microSD crd slot         |   | •   | •                                   |
| Battery powered          | •   | •   | •                                   |
| Display                  |   | OLED  |                                     |

## 4G USB Adapter



| Model                    | DWM-222/R                     |
|--------------------------|-------------------------------|
| Connection type          | 4G LTE Cat. 4                 |
| Connection 4G Speed      | D/L: 150 Mbps<br>U/L: 50 Mbps |
| Antennas                 | Internal                      |
| Integrated SIM card slot | Yes                           |
| Interface type           | USB 2.0                       |

## 5G USB Adapter



| Model                    | D501           |
|--------------------------|----------------|
| Connection type          | 5G NR          |
| Connection Speed         | Up to 3.4 Gbps |
| Antennas                 | 4x internal    |
| Integrated SIM card slot | Nano SIM (4FF) |
| Interface type           | USB Type-C     |



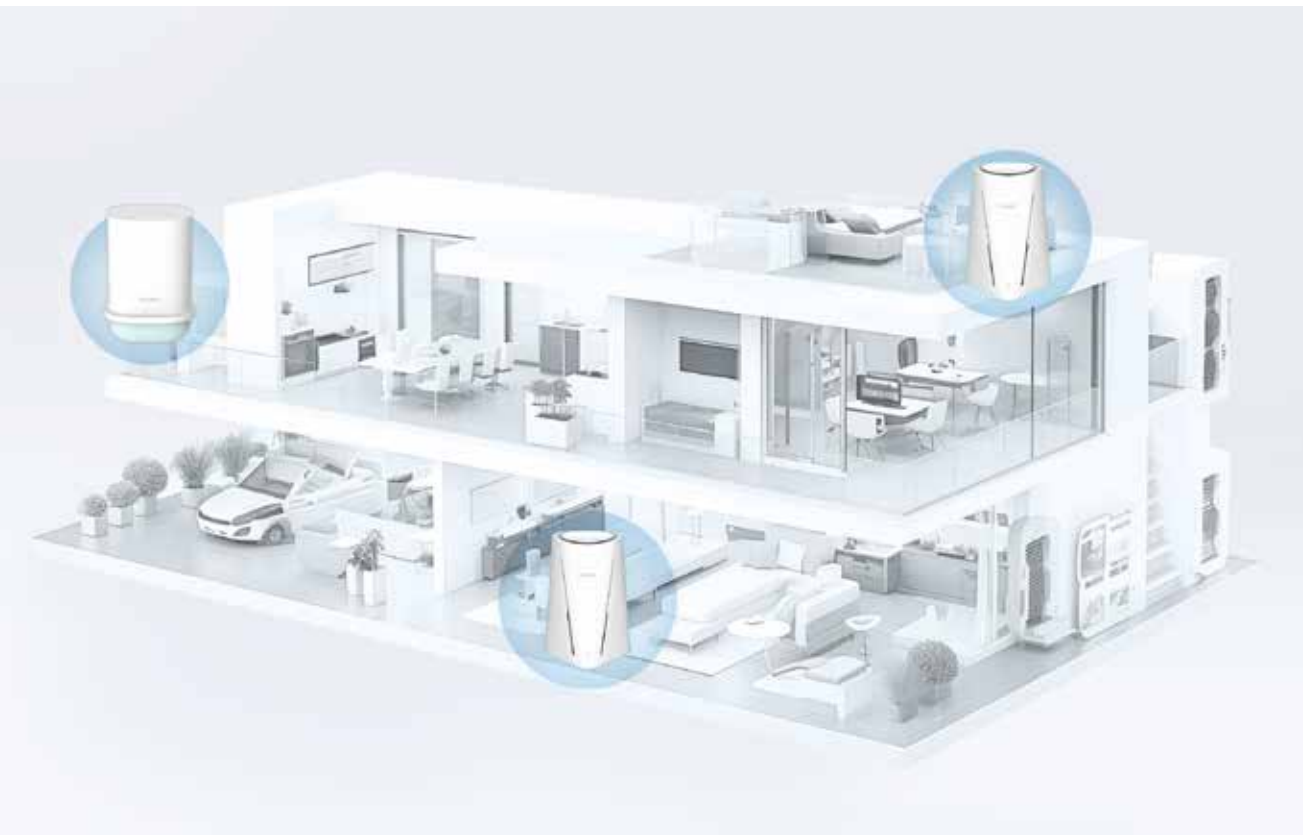
5G



5G

5G technology with multi-gigabit speeds of up to 4 Gb/s.

5G also provides lower latency, strong security, and great deployment flexibility.



| Model                      | G530   | DWP-1010  | DWP-1010/KT   |
|----------------------------|--|---|---|
| Product name               | 5G NR AX3000 Wi-Fi 6 Router  | 5G/LTE Outdoor CPE  | 5G/LTE Outdoor CPE  |
| Indoor/outdoor (IP-rating) | Indoor   | Outdoor (IP67)  | Indoor + Outdoor  |
| Mount                      | Desktop  | Wall and pole   | Desktop, wall and pole  |
| Wireless standard          | 802.11ax   | (For installation and maintenance only)                           | (For installation and maintenance only)                         |
| Wireless speed             | 574 Mbps 2.4 GHz<br>2402 Mbps 5 GHz  |   |   |
| Dual-band                  | •  |   |   |
| MU-MIMO                    | •  |   |   |
| Guest Wi-Fi network        | •  |   |   |
| Wi-Fi Antennas             | Internal   | Internal  | Internal  |
| WPA3                       | •  |   |   |
| 4G/5G Antennas             | Internal   | Internal  | Internal  |
| Type of WAN                | 1 Gigabit Ethernet WAN port<br>5G NR Sub 6 GHz:<br>n1/3/20/28/77/78 (D/L: 4 Gbps, U/L: 550 Mbps) | 5G NR Sub 6 GHz:<br>n1/3/20/28/77/78 (D/L: 4 Gbps, U/L: 620 Mbps) | 5G NR Sub 6GHz:<br>n1/3/20/28/77/78 (D/L: 4Gbps, U/L: 620 Mbps) |
| 4G/LTE fallback            | •  | •   | ☞   |
| Integrated SIM card slot   | •  | •   | ☞   |
| Wired LAN speed            | Gigabit  | 2.5 Gigabit   | 2.5 Gigabit   |
| Number of LAN ports        | 1  | 1   | 1   |
| PoE*                       |  | 802.3at   | 802.3at   |
| Failover Internet          | •  |   |   |

\*DWP-1010 includes a PoE injector.

# WI-FI EXTENDERS AND ADAPTERS

## Wi-Fi Extenders



EAGLEPRO AI



AQUILA PRO AI



| Model                         | DAP-1325   | E15  | DAP-1620   | E30  |
|-------------------------------|--|--|--|--|
| Wireless standard             | Wireless N300  | Wi-Fi 6 Wireless AX1500                                      | Wave 2 Wireless AC1300   | Wi-Fi 6 Wireless AX3000  |
| Wireless speed                | 300 Mbps 2.4 GHz   | 300 Mbps 2.4 GHz<br>1201 Mbps 5 GHz                          | 400 Mbps 2.4 GHz<br>867 Mbps 5 GHz   | 574 Mbps 2.4 GHz<br>2403 Mbps 5 GHz  |
| Dual-band                     |  | ●  | ●  | ●  |
| D-Link Wi-Fi Mesh support     |  |  |  |  |
| Operational modes             | <ul style="list-style-type: none"> <li>• Wi-Fi Extender</li> <li>• Wi-Fi client</li> </ul> | <ul style="list-style-type: none"> <li>• Extender</li> </ul> | <ul style="list-style-type: none"> <li>• Wi-Fi Extender</li> <li>• Wi-Fi client</li> </ul> | <ul style="list-style-type: none"> <li>• Extender</li> <li>• Access point</li> </ul> |
| WPA3 Wi-Fi encryption support |  |  |  |  |
| Antennas                      | External   | ●  | Foldable external  | ●  |
| Wired LAN speed               | Fast Ethernet  | Gigabit Ethernet   | Gigabit Ethernet   | Gigabit Ethernet   |
| Number of LAN ports           | 1  | 1  | 1  |  |

## Wi-Fi Adapters



| Model                     | AN3U               | DWA-131            | DWA-172                            | AC13U                              | DWA-181                            | DWA-182                            | DWA-582                            | AX9U                               | AX18U                               | DWA-X1850                           |
|---------------------------|--------------------|--------------------|------------------------------------|------------------------------------|------------------------------------|------------------------------------|------------------------------------|------------------------------------|-------------------------------------|-------------------------------------|
| Connection type           | Wi-Fi 4 N300"      | Wi-Fi 4 N300"      | Wi-Fi 5 AC600                      | Wi-Fi 5 AC1300"                    | Wi-Fi 5 Wave 2 AC1300              | Wi-Fi 5 Wave 2 AC1300              | Wi-Fi 5 AC1200                     | Wi-Fi 6 AX900"                     | Wi-Fi 6 AX1800                      | Wi-Fi 6 AX1800                      |
| Connection speed          | 300 Mbps 2.4 GHz   | 300 Mbps 2.4 GHz   | 150 Mbps 2.4 GHz<br>433 Mbps 5 GHz | 400 Mbps 2.4 GHz<br>867 Mbps 5 GHz | 400 Mbps 2.4 GHz<br>867 Mbps 5 GHz | 400 Mbps 2.4 GHz<br>867 Mbps 5 GHz | 300 Mbps 2.4 GHz<br>867 Mbps 5 GHz | 286 Mbps 2.4 GHz<br>600 Mbps 5 GHz | 574 Mbps 2.4 GHz<br>1201 Mbps 5 GHz | 574 Mbps 2.4 GHz<br>1200 Mbps 5 GHz |
| Dual-band                 |                    |                    | Yes                                | Yes                                | Yes                                | Yes                                | Yes                                | Yes                                | Yes                                 | Yes                                 |
| Antennas                  | Internal           | Internal           | High-gain external                 | Internal                           | Internal                           | Internal                           | High-gain external                 | Internal                           | Foldable                            | Internal & external                 |
| WPS one button connection |                    | Yes                | Yes                                |                                    | Yes                                | Yes                                |                                    |                                    | Yes                                 |                                     |
| WPA support               | WPA, WPA2 and WPA3 | WPA, WPA2 and WPA3 | WPA, WPA2 and WPA3                 | WPA, WPA2 and WPA3                 | WPA, WPA2 and WPA3                 | WPA, WPA2 and WPA3                 | WPA and WPA2                       | WPA, WPA2 and WPA3                 | WPA2 and WPA3                       | WPA2 and WPA3                       |
| Interface type            | USB 2.0            | USB 2.0            | USB 2.0                            | USB 2.0                            | USB 2.0                            | USB 3.0                            | PCIe                               | USB 2.0                            | USB 3.0                             | USB 3.0                             |

ENTERPRISE ROUTER

VPN/Firewall  
Load balancing  
Business Routers



| MODEL                   | DSR-250V2   |
|-------------------------|---|
| Wireless standard       |   |
| Wireless speed          |   |
| Dual-band               |   |
| MIMO                    |   |
| Guest Wi-Fi network     |   |
| Captive Portal          |   |
| Wi-Fi Antennas          |   |
| Type of WAN             | 1 x Gigabit Ethernet                                      |
| Number of LAN ports     | 3 + 1 (WAN/LAN) x Gigabit Ethernet                        |
| Console port            | RJ-45   |
| Fail-safe Internet      | •   |
| Outbound load balancing | •   |
| USB port                | USB 2.0 x 2   |
| USB file sharing        | •   |
| VPN protocols           | IPSec, PPTP/L2TP, GRE, SSL, OpenVPN                       |
| VPN encryption          | DES, 3DES, AES, Blowfish, Twofish, CAST128                |
| VPN throughput          | 200 Mbps  |
| Firewall throughput     | 950 Mbps  |
| L3 routing              | RIP v1/v2, OSPF, OSPFv3                                   |
| Authentication          | Internal User Database, Radius, POP3, LDAP, AD, NT Domain |
| Bandwidth control       | •   |
| Command line, SNMP      | •   |





4G/5G / WI-FI ROUTERS



| Model                    | G403   | DWR-960  | G415  | G416  | G530  | G572                                 | R15/E                               | R32/E                               | R95  |
|--------------------------|--|--|---|---|---|--------------------------------------|-------------------------------------|-------------------------------------|--|
| 4G LTE/5G                | 4G LTE Cat. 4                                | 4G LTE Cat. 7                                    | 4G LTE Cat. 4                                   | 4G LTE Cat. 6                                   | 5G NR Sub 6 GHz   | 5G NR Sub 6 GHz                      |                                     |                                     |  |
| Type of WAN              | Fast Ethernet, (D/L: 150 Mbps, U/L: 50 Mbps) | Gigabit Ethernet, (D/L: 300 Mbps, U/L: 100 Mbps) | Gigabit Ethernet, (D/L: 150 Mbps, U/L: 50 Mbps) | Gigabit Ethernet, (D/L: 300 Mbps, U/L: 50 Mbps) | 1 Gigabit Ethernet WAN port<br>n1/3/20/28/77/78<br>(D/ : 3.4 Gbps, U/L: 550 Mbps) | 2.5 Gigabit Ethernet WAN port        | Gigabit Ethernet WAN port           | Gigabit Ethernet WAN port           | 2.5 Gigabit Ethernet WAN port                          |
| Wireless standard        | Wireless N300                                | Wireless AC1200                                  | Wireless AX1500                                 | Wireless AX1500                                 | 802.11ax  | Wi-Fi 7 Wireless BE7200              | Wi-Fi 6 Wireless AX1500             | Wi-Fi 6 Wireless AX3200             | Wi-Fi 7 Wireless BE7200                                |
| Wireless speed           | 300 Mbps 2.4 GHz                             | 300 Mbps 2.4 GHz<br>867 Mbps 5 GHz               | 300 Mbps 2.4 GHz<br>1201 Mbps 5 GHz             | 300 Mbps 2.4 GHz<br>1201 Mbps 5 GHz             | 600 Mbps 2.4 GHz<br>2400 Mbps 5 GHz   | 1376 Mbps 2.4 GHz<br>5764 Mbps 5 GHz | 300 Mbps 2.4 GHz<br>1201 Mbps 5 GHz | 800 Mbps 2.4 GHz<br>2402 Mbps 5 GHz | 688 Mbps 2.4 GHz<br>2882 Mbps 5 GHz<br>5764 Mbps 6 GHz |
| Dual-band                |  | •  | •   | •   | •   | •                                    | •                                   | •                                   | •  |
| MIMO                     |  | •  | • (MU-MIMO)                                     | • (MU-MIMO)                                     | •   | •                                    | •                                   | •                                   | •  |
| OFDMA                    |  |  | •   | •   |   |                                      | •                                   | •                                   | •  |
| Wireless security        | WPA2/WPA3                                    | WPA/WPA2   | WPA2/WPA3                                       | WPA2/WPA3                                       |   | •                                    | WPA2/WPA3                           | WPA2/WPA3                           | WPA2/WPA3  |
| Wi-Fi Antennas           | Fixed external                               | Internal   | Internal  | Internal  | Internal  | Internal                             | •                                   | •                                   | Internal   |
| 4G/5G Antennas           | Fixed external                               | Detachable external                              | Detachable external                             | Detachable external                             | Internal  | Internal                             |                                     |                                     | •  |
| Integrated SIM card slot | •  | •  | •   | •   | •   | •                                    |                                     |                                     |  |
| Wired LAN speed          | Fast Ethernet                                | Gigabit  | Gigabit   | Gigabit   | Gigabit   | Gigabit                              | Gigabit                             | Gigabit                             | Gigabit  |
| Number of LAN ports      | 4  | 1 + 1 (WAN/LAN)                                  | 3   | 3   | 1   | 4                                    | 3                                   | 4                                   | 3  |
| Quick VPN                |  |  | •   | •   |   |                                      | •                                   | •                                   | •  |
| Static routes            | •  |  | •   | •   |   |                                      | •                                   | •                                   | •  |
| Fail-safe Internet       | •  | •  | •   | •   |   |                                      |                                     |                                     |  |
| USB port                 |  |  |   |   | USB 2.0 x 1   | 1                                    | 1                                   | 1                                   | 1  |



USB HUBS AND DOCKING STATIONS



# Pocket Docking Station

D-Link's range of USB hubs and docking stations enhances connectivity for desktop and laptop PCs and Macs, as well as smartphones and tablets (iOS/Android) at both the office and work environments. Simply plug them into an available USB-C port (some models also come with a USB adapter) to enjoy additional USB ports, a LAN Ethernet port for wired internet connection, HDMI outputs, and SD/MicroSD card slots.

Plug & Play operation and a compact design with a metallic finish for easy transport.



| Model                | DUB-M420   | DUB-M520      | DUB-M530              | DUB-M810              | DUB-V310              | DUB-2334      | DUP-501        | DUP-A01           |
|----------------------|--|---------------|-----------------------|-----------------------|-----------------------|---------------|----------------|-------------------|
| Number of ports      | 4  | 5             | 5                     | 8                     | 3                     | 5             | 5              | 10                |
| USB 3.0              | 2  | 2             | 2                     | 3                     |                       | 3             | 1              | 4                 |
| USB-C with power     | 1 (up to 60W)  | 1 (up to 60W) |                       | 1 (up to 100W)        |                       | 1 (up to 60W) | 1 (up to 100W) | 1 (up to 100W)    |
| Gigabit Ethernet     |  | 1             |                       | 1                     |                       | 1             | 1              | 1                 |
| 2.5 Gigabit Ethernet |  |               |                       |                       |                       |               |                |                   |
| Display output       | HDMI x 1   | HDMI x 1      | HDMI x 1              | HDMI x 1              | HDMI x 1, DPx1, VGAx1 |               | HDMI x1, DPx2  | HDMI 2.0x2        |
| Maximum Resolution   | Up to 4K   | Up to 4K      | Up to 4K              | Up to 4K              | Up to 4K <sup>1</sup> |               | Up to 4k       | Up to 4K          |
| Card reader          |  |               | SD x 1<br>microSD x 1 | SD x 1<br>microSD x 1 |                       |               |                | SDx1<br>MicroSDx1 |
| Compatible with      | Computer with USB-C or Thunderbolt 3 port(s) running Microsoft Windows, Mac OS or Chrome OS<br>Smartphones with USB-C port running Android OS <sup>2</sup> |               |                       |                       |                       |               |                |                   |



| Model                      | DUB-H4   | DUB-H7                                     | DUB-1312  | DUB-1340  |
|----------------------------|--|--|---|---|
| Number of ports            | 4  | 7  | 1   | 4   |
| USB 3.0                    |  |  | 1   | 4   |
| Standards                  | OHCI / UHCI / EHCI / USB 2.0 / USB 1.1                       |  | OHCI / EHCI / USB 3.0 / USB 2.0 / USB 1.1/IEEE 802.3 et 802.3U                            | OHCI / UHCI / USB 3.0 / USB 2.0 / USB 1.1                 |
| Interfaces Downstream Port | 7 USB 2.0 Type-A (Female)                                    | 4 USB 2.0 Type-A (Female)                  | USB Type A  | 4 USB 3.0 Type-A (Female)                                 |
| Interfaces Upstream Port   | 1 USB 2.0 Mini-B (Female)                                    | 1 USB 2.0 Type-C (Female)                  | RJ-45 Ethernet Port (10/100/1000 Mbps)  | 1 USB 3.0 Micro-B (Female)                                |
| Power Input                | Bus powered from USB ports : 5V / 500mA                      | Bus powered from USB ports : 5V / 1.5 A DC | Bus Powered 5V DC / 500mA   | Bus powered from USB 3.0 ports : 5V / 900 mA              |
| Compatible with            | Windows 10/8/7/Vista/XP and Mac OS X 10.4 or above           |  | Windows 10/8 and Mac OS 10.9 or above   | Windows 10/8/7/Vista/XP and Mac OS X 10.4 or above        |
| Card reader                |  |  |   |   |
| Compatible with            | Microsoft Windows 10/8/7/Vista/XP and Mac OS X 10.4 or above |  | Microsoft Windows 8/7/Vista/XP SP3, MAC OS 10.6 to 10.8 and Linux kernel 2.6 14x or above | Microsoft Windows 10/8/Win 8 RT/Vita/XP, Mac OS and Linux |

PARTNER PROGRAMME



D-Link's success as a provider of network solutions has been built on its relationship and unrivalled commitment to its partners. Our **Value In Partnership+ Programme** not only builds on these relationships but also takes them to the next level by offering networking solutions, training and processes that increase your ability to be profitable with us, grow and diversify your business and provide excellent value to your customers.

**Partner Benefits Summary\***

|   | REGISTERED<br>D-Link | BRONZE<br>D-Link | SILVER<br>D-Link | GOLD<br>D-Link |
|---|----------------------|------------------|------------------|----------------|
| Access to online D-Link Partner Portal            | Yes                  | Yes              | Yes              | Yes            |
| VIP+ Newsletter                                   | Yes                  | Yes              | Yes              | Yes            |
| Free Online Certification Training and Resources  | Yes                  | Yes              | Yes              | Yes            |
| Webinars and Workshops                            | Yes                  | Yes              | Yes              | Yes            |
| Online Product Tools                              | Yes                  | Yes              | Yes              | Yes            |
| Sales Support Material                            | Yes                  | Yes              | Yes              | Yes            |
| Exclusive Monthly Promotions                      | Yes                  | Yes              | Yes              | Yes            |
| Deal Registration                                 |                      | Yes              | Yes              | Yes            |
| Eligible for the Demo Purchase Programme          |                      | Yes              | Yes              | Yes            |
| Priority Tech Support                             |                      | Yes              | Yes              | Yes            |
| Campaigns Centre for Lead Generation              |                      |                  | Yes              | Yes            |
| Dedicated Account Management                      |                      |                  | Yes              | Yes            |
| Eligible for Sales Leads                          |                      |                  | Yes              | Yes            |
| Presence on D-Link Website (Where to Buy Section) |                      |                  | Yes              | Yes            |
| Invitation to Partner Roundtables                 |                      |                  |                  | Yes            |

\* Benefits could vary according to the country, please contact your local D-Link representative for more information.

**Certification and Training**

The D-Link Certification Programme is a **free online, on-demand** training programme that provides sales and technical coursework and exams focused on specific technologies: Wireless, Storage, Security, Switching and IP Surveillance. It's an opportunity for individuals in your organisation to become **D-Link Specialists**.



Designed for **sales professionals**, DSS courses focus on D-Link's market strategy, value proposition, product positioning, identifying opportunities and understanding customer needs.



Designed for **pre-sales technical professionals** to ensure that they are knowledgeable about networking concepts and the features, functionality and positioning of D-Link products.

**Present your projects professionally**



**Wi-Fi Planner Pro**

A tool with an intelligent algorithm that visually represents the RF signal coverage for D-Link Wi-Fi access points. You can use real floor plans, add obstacles, and specify the material of walls for the coverage map.

It allows for exporting the entire mapping report and proposed access points for the project in PDF format.

Visit [vipplus.dlink.com](http://vipplus.dlink.com) to join today!

D-Link is a registered trademark of D-Link Corporation and its foreign subsidiaries. Nuclias Cloud, Nuclias Connect, EAGLE PRO AI, AQUILA PRO, mydlink, Value in Partnership+, D-Link Green, D-Link Assist, and other registered trademarks of D-Link not listed here are trademarks or registered trademarks of D-Link Corporation and/or D-Link Europe Ltd in Europe and/or other countries. Other brands and product names may be registered trademarks and the property of their respective holders. All rights reserved. Copyright ©2025 D-Link Europe Limited.

**Disclaimer**

Every reasonable effort has been made to ensure that the data in this product guide is accurate at the time of printing and remains valid except for any accidental errors or omissions. Specifications may change without notice.

*[www.dlink.com](http://www.dlink.com)*